
Product Information

Size:

50ug

Reactivity:

Mouse, Human

Source:

Rabbit

Isotype:

IgG

Applications:

ELISA, WB

Recommended dilutions:

ELISA:1:2000-1:10000, WB:1:1000-1:5000

Protein Background:

IGF-binding proteins prolong the half-life of the IGFs and have been shown to either inhibit or stimulate the growth promoting effects of the IGFs on cell culture. They alter the interaction of IGFs with their cell surface receptors. Promotes cell migration.

Gene ID:

Igfbp1

Uniprot

P47876

Synonyms:

Insulin-like growth factor-binding protein 1 (IBP-1) (IGF-binding protein 1) (IGFBP-1), Igfbp1, Igfbp-1

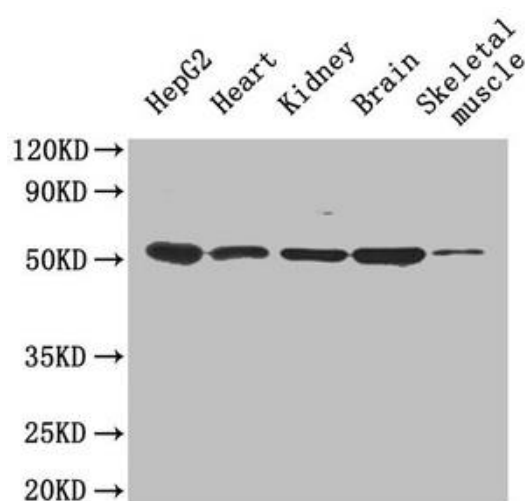
Immunogen:

Recombinant Mouse Insulin-like growth factor-binding protein 1 protein (26-272AA).

Storage:

Preservative: 0.03% Proclin 300. Constituents: 50% Glycerol, 0.01M PBS, PH 7.4

Product Images



Western Blot

Positive WB detected in: HepG2 whole cell lysate, Mouse heart tissue, Mouse kidney tissue, Mouse brain tissue, Mouse skeletal muscle tissue

All lanes: Igfbp1 antibody at 0.6µg/ml

Secondary

Goat polyclonal to rabbit IgG at 1/50000 dilution

Predicted band size: 30 kDa

Observed band size: 50 kDa

.