

## Product Information

**Size:**

50ug

**Reactivity:**

Sheep

**Source:**

Rabbit

**Isotype:**

IgG

**Applications:**

ELISA, WB, IHC

**Recommended dilutions:**

ELISA:1:2000-1:10000, WB:1:500-1:2000,  
IHC:1:20-1:200

**Protein Background:**

Cytokine that can act as a growth factor for activated T and NK cells, enhance the lytic activity of NK/lymphokine-activated killer cells, and stimulate the production of IFN-gamma by resting PBMC By similarity. Associates with IL23A to form the IL-23 interleukin, a heterodimeric cytokine which functions in innate and adaptive immunity. IL-23 may constitute with IL-17 an acute response to infection in peripheral tissues. IL-23 binds to a heterodimeric receptor complex composed of IL12RB1 and IL23R, activates the Jak-Stat signaling cascade, stimulates memory rather than naive T-cells and promotes production of proinflammatory cytokines. IL-23 induces autoimmune inflammation and thus may be responsible for autoimmune inflammatory diseases and may be important for tumorigenesis By similarity.

**Gene ID:**

IL12B

**Uniprot**

P68220

**Synonyms:**

Interleukin-12 subunit beta (IL-12B) (Cytotoxic lymphocyte maturation factor 40 kDa subunit) (CLMF p40) (IL-12 subunit p40), IL12B

**Immunogen:**

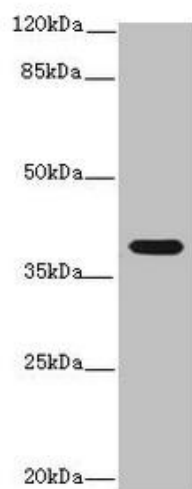
Recombinant Sheep Interleukin-12 subunit &beta; protein (23-327AA).

**Storage:**

Preservative: 0.03% Proclin 300. Constituents: 50% Glycerol, 0.01M PBS, PH 7.4

## Product Images

---



### Western blot

All lanes: Interleukin-12 subunit beta antibody at 14 $\mu$ g/ml + K562 whole cell lysate

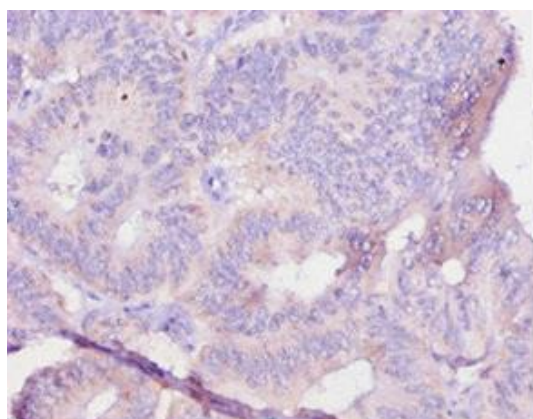
Secondary

Goat polyclonal to rabbit IgG at 1/10000 dilution

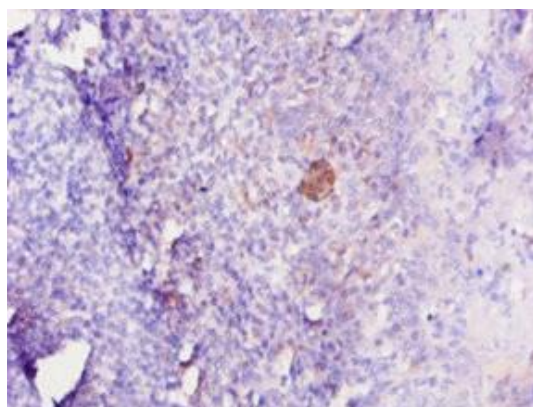
Predicted band size: 37 kDa

Observed band size: 37 kDa

.



Immunohistochemistry of paraffin-embedded human colon cancer using PACO27589 at dilution of 1:10.



Immunohistochemistry of paraffin-embedded human tonsil tissue using PACO27589 at dilution of 1:10.