

PACO27637

---

## Product Information

**Size:**

50ug

**Reactivity:**

Human, Mouse, Rat

**Source:**

Rabbit

**Isotype:**

IgG

**Applications:**

ELISA, WB

**Recommended dilutions:**

ELISA:1:2000-1:10000, WB:1:1000-1:5000

**Protein Background:**

Protein phosphatase that may play a role in regulation of cell cycle progression via dephosphorylation of its substrates whose appropriate phosphorylation states might be crucial for cell proliferation. Selectively associates with integrin linked kinase (ILK), to modulate cell adhesion and growth factor signaling. Inhibits the ILK-GSK3B signaling axis and may play an important role in inhibiting oncogenic transformation.

**Gene ID:**

ILKAP

**Uniprot**

Q9H0C8

**Synonyms:**

Integrin-linked kinase-associated serine/threonine phosphatase 2C (ILKAP) (EC 3.1.3.16), ILKAP

**Immunogen:**

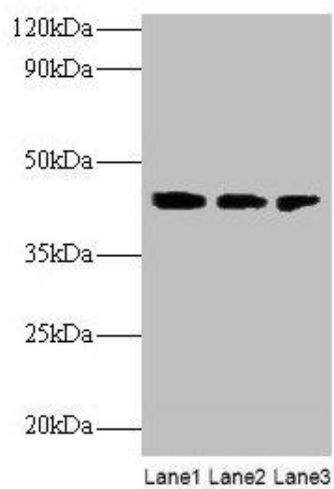
Recombinant Human Integrin-linked kinase-associated serine/threonine phosphatase 2C protein (1-392AA).

**Storage:**

Preservative: 0.03% Proclin 300. Constituents: 50% Glycerol, 0.01M PBS, PH 7.4

## Product Images

---



### Western blot

All lanes: ILKAP antibody at 2 $\mu$ g/ml

Lane 1: Rat kidney tissue

Lane 2: U251 whole cell lysate

Lane 3: Mouse stomach tissue

Secondary

Goat polyclonal to rabbit IgG at 1/10000 dilution

Predicted band size: 43 kDa

Observed band size: 43 kDa