

IMPDH2 Antibody



PACO27725

Product Information

Size:

50ug

Reactivity:

Human

Source:

Rabbit

Isotype:

IgG

Applications:

ELISA, WB, IHC, IF

Recommended dilutions:

ELISA:1:2000-1:10000, WB:1:500-1:2000,
IHC:1:20-1:200, IF:1:50-1:200

Protein Background:**Gene ID:**

IMPDH2

Uniprot

P12268

Synonyms:

Inosine-5'-monophosphate dehydrogenase 2 (IMP dehydrogenase 2) (IMPD 2) (IMPDH 2) (EC 1.1.1.205) (IMPDH-II), IMPDH2, IMPD2

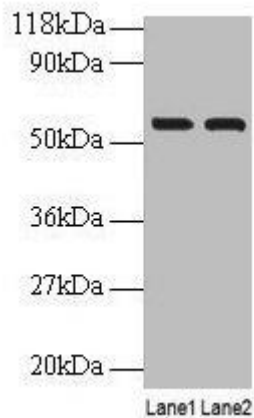
Immunogen:

Recombinant Human Inosine-5'-monophosphate dehydrogenase 2 protein (5-514AA).

Storage:

Preservative: 0.03% Proclin 300. Constituents: 50% Glycerol, 0.01M PBS, PH 7.4

Product Images



Western blot

All lanes: IMPDH2 antibody at 2 μ g/ml

Lane 1: EC109 whole cell lysate

Lane 2: 293T whole cell lysate

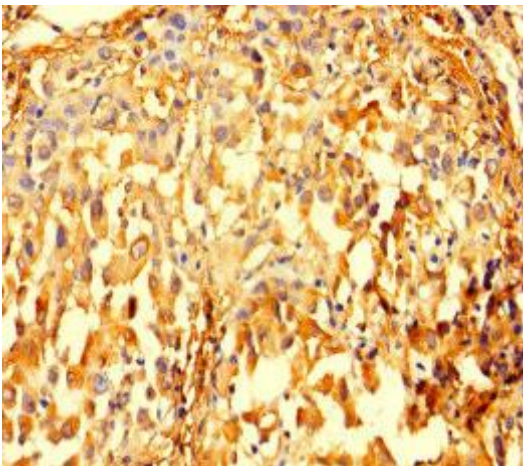
Secondary

Goat polyclonal to rabbit IgG at 1/15000 dilution

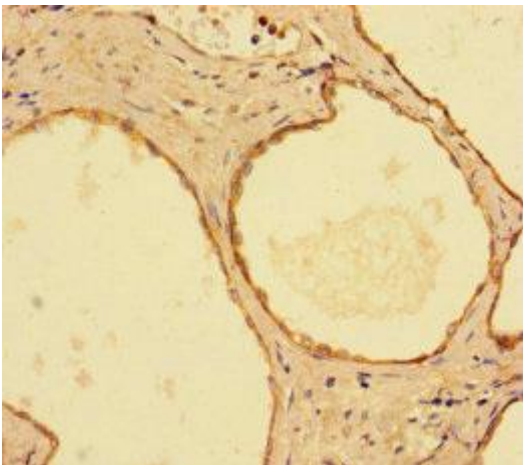
Predicted band size: 56 kDa

Observed band size: 56 kDa

.



Immunohistochemistry of paraffin-embedded human lung cancer using PACO27725 at dilution of 1:100.



Immunohistochemistry of paraffin-embedded human prostate cancer using PACO27725 at dilution of 1:100.