

KCNJ1 Antibody



PACO27749

Product Information

Size:

50ug

Reactivity:

Human

Source:

Rabbit

Isotype:

IgG

Applications:

ELISA, WB, IF

Recommended dilutions:

ELISA:1:2000-1:10000, WB:1:1000-1:5000,
IF:1:50-1:200

Protein Background:

Gene ID:

KCNJ1

Uniprot

P48048

Synonyms:

ATP-sensitive inward rectifier potassium channel 1 (ATP-regulated potassium channel ROM-K) (Inward rectifier K(+) channel Kir1.1) (Potassium channel, inwardly rectifying subfamily J member 1), KCNJ1, ROMK1

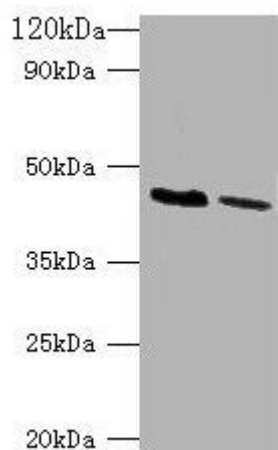
Immunogen:

Recombinant Human ATP-sensitive inward rectifier potassium channel 1 protein (178-391AA).

Storage:

Preservative: 0.03% Proclin 300. Constituents: 50% Glycerol, 0.01M PBS, PH 7.4

Product Images



Western blot

All lanes: KCNJ1 antibody at 2 μ g/ml

Lane 1: HepG2 whole cell lysate

Lane 2: HeLa whole cell lysate

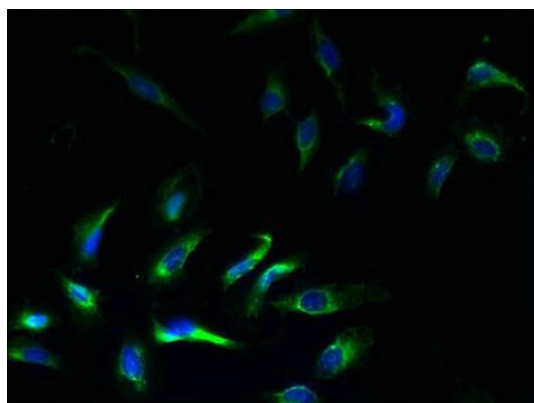
Secondary

Goat polyclonal to rabbit IgG at 1/10000 dilution

Predicted band size: 45, 43 kDa

Observed band size: 45 kDa

.



Immunofluorescent analysis of HeLa cells using PACO27749 at dilution of 1:100 and Alexa Fluor 488-conjugated AffiniPure Goat Anti-Rabbit IgG(H+L).