

# Klkb1 Antibody



PACO27821

---

## Product Information

**Size:**

50ug

**Reactivity:**

Rat, Human

**Source:**

Rabbit

**Isotype:**

IgG

**Applications:**

ELISA, WB

**Recommended dilutions:**

ELISA:1:2000-1:10000, WB:1:1000-1:5000

**Protein Background:****Gene ID:**

Klkb1

**Uniprot**

P14272

**Synonyms:**

Plasma kallikrein (EC 3.4.21.34) (Fletcher factor) (Kininogenin) (Plasma prekallikrein) [Cleaved into: Plasma kallikrein heavy chain; Plasma kallikrein light chain], Klkb1, Klk3 Pk

**Immunogen:**

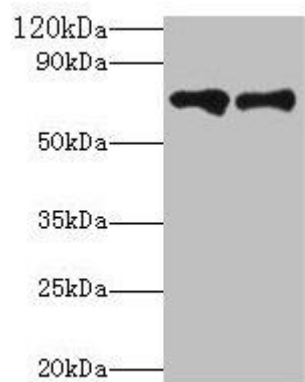
Recombinant Rat Plasma kallikrein protein (391-638AA).

**Storage:**

Preservative: 0.03% Proclin 300. Constituents: 50% Glycerol, 0.01M PBS, PH 7.4

## Product Images

---



### Western blot

All lanes: Klkb1 antibody at 2 $\mu$ g/ml

Lane 1: Hela whole cell lysate

Lane 2: Rat brain tissue

Secondary

Goat polyclonal to rabbit IgG at 1/10000 dilution

Predicted band size: 72 kDa

Observed band size: 72 kDa