

# KRTAP23-1 Antibody



PACO27877

---

## Product Information

**Size:**

50ug

**Reactivity:**

Human

**Source:**

Rabbit

**Isotype:**

IgG

**Applications:**

ELISA, IHC

**Recommended dilutions:**

ELISA:1:2000-1:10000, IHC:1:20-1:200

**Protein Background:**

In the hair cortex, hair keratin intermediate filaments are embedded in an interfilamentous matrix, consisting of hair keratin-associated proteins (KRTAP), which are essential for the formation of a rigid and resistant hair shaft through their extensive disulfide bond cross-linking with abundant cysteine residues of hair keratins. The matrix proteins include the high-sulfur and high-glycine-tyrosine keratins.

**Gene ID:**

KRTAP23-1

**Uniprot**

A1A580

**Synonyms:**

Keratin-associated protein 23-1, KRTAP23-1, KAP23.1

**Immunogen:**

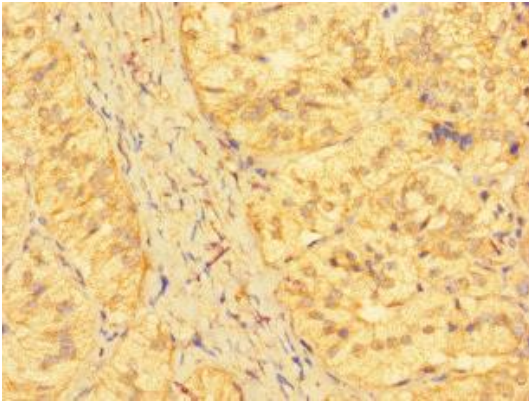
Recombinant Human Keratin-associated protein 23-1 protein (1-65AA).

**Storage:**

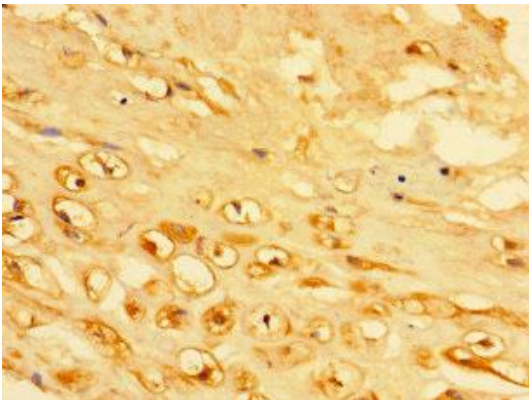
Preservative: 0.03% Proclin 300. Constituents: 50% Glycerol, 0.01M PBS, PH 7.4

## Product Images

---



Immunohistochemistry of paraffin-embedded human adrenal gland tissue using PACO27877 at dilution of 1:100.



Immunohistochemistry of paraffin-embedded human placenta tissue using PACO27877 at dilution of 1:100.