

### Product Information

**Size:**

50ug

**Reactivity:**

Human

**Source:**

Rabbit

**Isotype:**

IgG

**Applications:**

ELISA, IHC

**Recommended dilutions:**

ELISA:1:2000-1:10000, IHC:1:20-1:200

**Protein Background:**

Binding to cells via a high affinity receptor, laminin is thought to mediate the attachment, migration and organization of cells into tissues during embryonic development by interacting with other extracellular matrix components.

**Gene ID:**

LAMA5

**Uniprot**

O15230

**Synonyms:**

Laminin subunit alpha-5 (Laminin-10 subunit alpha) (Laminin-11 subunit alpha) (Laminin-15 subunit alpha), LAMA5, KIAA0533 KIAA1907

**Immunogen:**

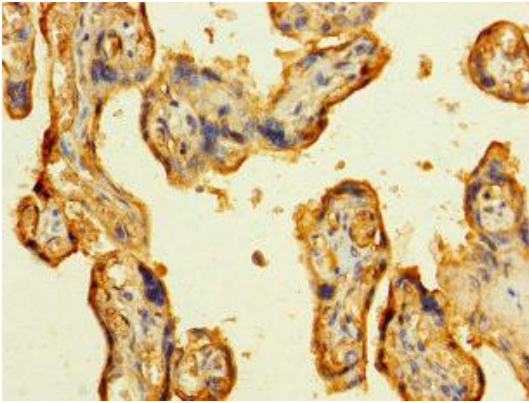
Recombinant Human Laminin subunit alpha-5 protein (3401-3692AA).

**Storage:**

Preservative: 0.03% Proclin 300. Constituents: 50% Glycerol, 0.01M PBS, PH 7.4

## Product Images

---



Immunohistochemistry of paraffin-embedded human placenta tissue using PACO27901 at dilution of 1:100.