

### Product Information

**Size:**

50ug

**Reactivity:**

Human, Mouse

**Source:**

Rabbit

**Isotype:**

IgG

**Applications:**

ELISA, WB, IHC, IF

**Recommended dilutions:**

ELISA:1:2000-1:10000, WB:1:500-1:2000,  
IHC:1:20-1:200, IF:1:50-1:200

**Protein Background:**

Implicated in tumor cell metastasis. May function in protection of the lysosomal membrane from autodigestion, maintenance of the acid, c environment of the lysosome, adhesion when expressed on the cell surface (plasma membrane), and inter- and intracellular signal transduction. Protects cells from the toxic effects of methylating mutagens.

**Gene ID:**

LAMP2

**Uniprot**

P13473

**Synonyms:**

Lysosome-associated membrane glycoprotein 2 (LAMP-2) (Lysosome-associated membrane protein 2) (CD107 antigen-like family member B) (LGP-96) (CD antigen CD107b), LAMP2

**Immunogen:**

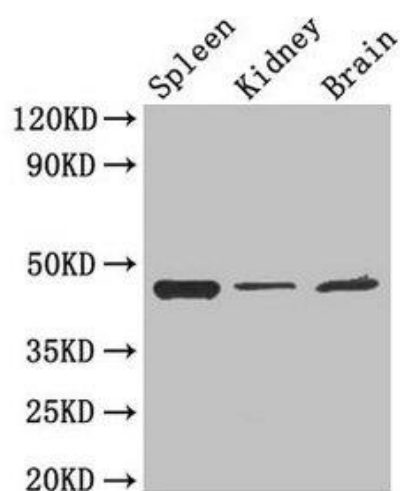
Recombinant Human Lysosome-associated membrane glycoprotein 2 protein (54-268AA).

**Storage:**

Preservative: 0.03% Proclin 300. Constituents: 50% Glycerol, 0.01M PBS, PH 7.4

## Product Images

---



### Western Blot

Positive WB detected in: Mouse spleen tissue, Mouse kidney tissue, Mouse brain tissue

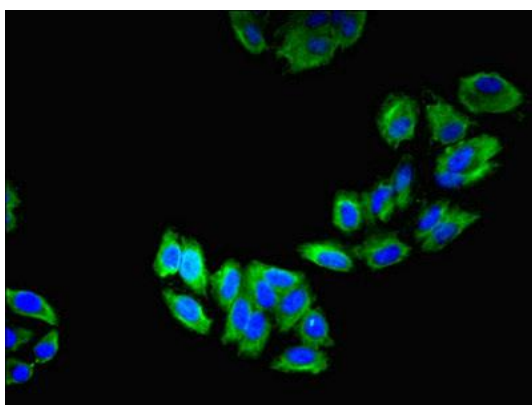
All lanes: LAMP2 antibody at 4 $\mu$ g/ml

Secondary

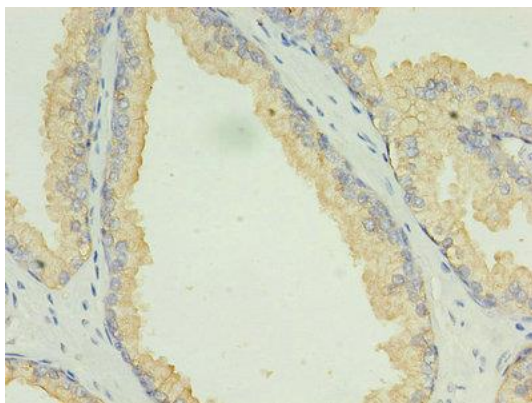
Goat polyclonal to rabbit IgG at 1/50000 dilution

Predicted band size: 45, 46 kDa

Observed band size: 45 kDa



Immunofluorescent analysis of HepG2 cells using PACO27905 at dilution of 1:100 and Alexa Fluor 488-conjugated AffiniPure Goat Anti-Rabbit IgG(H+L).



Immunohistochemistry of paraffin-embedded human prostate cancer using PACO27905 at dilution of 1:100.