

LIG1 Antibody



PACO27957

Product Information

Size:

50ug

Reactivity:

Human

Source:

Rabbit

Isotype:

IgG

Applications:

ELISA, IHC, IF

Recommended dilutions:

ELISA:1:2000-1:10000, IHC:1:20-1:200,
IF:1:50-1:200

Protein Background:

DNA ligase that seals nicks in double-stranded DNA during DNA replication, DNA recombination and DNA repair.

Gene ID:

LIG1

Uniprot

P18858

Synonyms:

DNA ligase 1 (EC 6.5.1.1) (DNA ligase I) (Polydeoxyribonucleotide synthase [ATP] 1),
LIG1

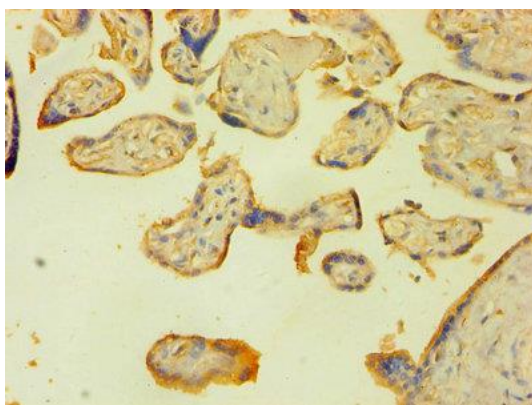
Immunogen:

Recombinant Human DNA ligase 1 protein (1-919AA).

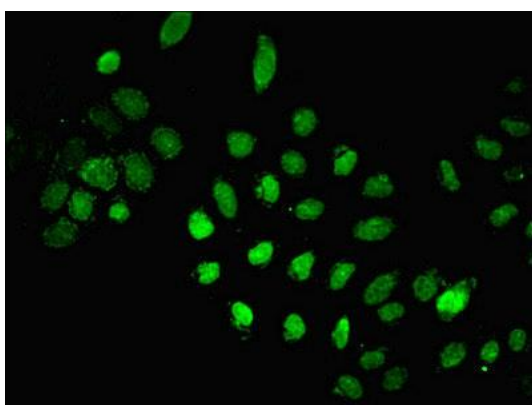
Storage:

Preservative: 0.03% Proclin 300. Constituents: 50% Glycerol, 0.01M PBS, PH 7.4

Product Images



Immunohistochemistry of paraffin-embedded human placenta tissue using PACO27957 at dilution of 1:100.



Immunofluorescent analysis of A549 cells using PACO27957 at dilution of 1:100 and Alexa Fluor 488-conjugated AffiniPure Goat Anti-Rabbit IgG(H+L).