

PACO27981

Product Information

Size:

50ug

Reactivity:

Human, Mouse

Source:

Rabbit

Isotype:

IgG

Applications:

ELISA, WB, IF

Recommended dilutions:

ELISA:1:2000-1:10000, WB:1:1000-1:5000,
IF:1:50-1:200

Protein Background:

Involved in the maturation of specific proteins in the endoplasmic reticulum. May be required for maturation and transport of active lipoprotein lipase (LPL) through the secretory pathway.

Gene ID:

LMF2

Uniprot

Q9BU23

Synonyms:

Lipase maturation factor 2 (Transmembrane protein 112B) (Transmembrane protein 153), LMF2, TMEM112B TMEM153

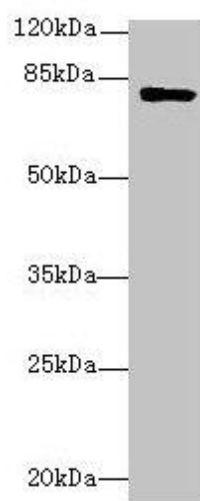
Immunogen:

Recombinant Human Lipase maturation factor 2 protein (432-636AA).

Storage:

Preservative: 0.03% Proclin 300. Constituents: 50% Glycerol, 0.01M PBS, PH 7.4

Product Images



Western blot

All lanes: LMF2 antibody at 6 μ g/ml + Mouse kidney tissue

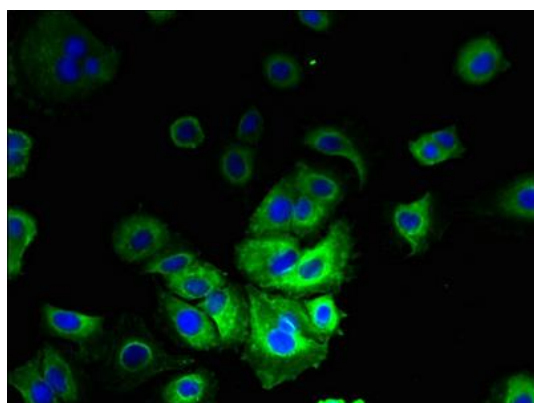
Secondary

Goat polyclonal to rabbit IgG at 1/10000 dilution

Predicted band size: 80, 77, 68 kDa

Observed band size: 80 kDa

.



Immunofluorescent analysis of MCF-7 cells using PACO27981 at dilution of 1:100 and Alexa Fluor 488-conjugated AffiniPure Goat Anti-Rabbit IgG(H+L).