

Product Information

Size:

50ug

Reactivity:

Human

Source:

Rabbit

Isotype:

IgG

Applications:

ELISA, IHC

Recommended dilutions:

ELISA:1:2000-1:10000, IHC:1:20-1:200

Protein Background:

Both isoforms function as amine oxidases toward elastin and different types of collagens. Isoform 1 shows the highest activity toward collagen type VIII, while Isoform 2 presents the highest activity toward collagen type IV.

Gene ID:

LOXL3

Uniprot

P58215

Synonyms:

Lysyl oxidase homolog 3 (EC 1.4.3. -) (EC 1.4.3.13) (Lysyl oxidase-like protein 3), LOXL3, LOXL

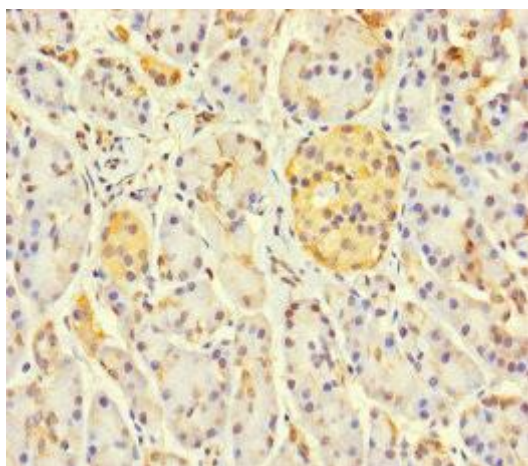
Immunogen:

Recombinant Human Lysyl oxidase homolog 3 protein (401-608AA).

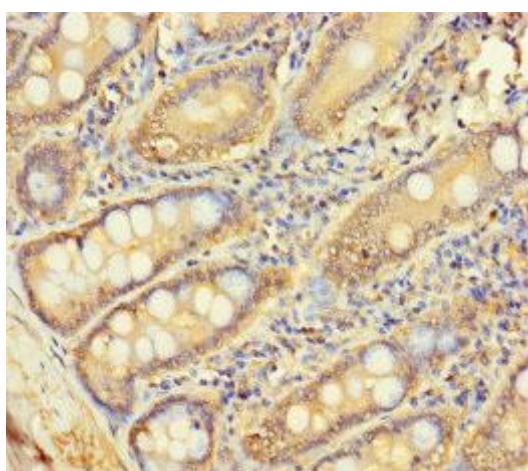
Storage:

Preservative: 0.03% Proclin 300. Constituents: 50% Glycerol, 0.01M PBS, PH 7.4

Product Images



Immunohistochemistry of paraffin-embedded human pancreatic tissue using PACO28001 at dilution of 1:100.



Immunohistochemistry of paraffin-embedded human small intestine tissue using PACO28001 at dilution of 1:100.