

Lypla1 Antibody



PACO28090

Product Information

Size:

50ug

Reactivity:

Mouse

Source:

Rabbit

Isotype:

IgG

Applications:

ELISA, IF

Recommended dilutions:

ELISA:1:2000-1:10000, IF:1:50-1:200

Protein Background:

Hydrolyzes fatty acid, from S-acylated cysteine residues in proteins such as trimeric G alpha proteins or HRAS. Has depalmitoylating activity toward KCNMA1. Has low lysophospholipase activity.

Gene ID:

Lypla1

Uniprot

P97823

Synonyms:

Acyl-protein thioesterase 1 (APT-1) (EC 3.1.2. -) (Lysophospholipase 1) (Lysophospholipase I) (LPL-I) (LysoPLA I), Lypla1, Apt1 Pla1a

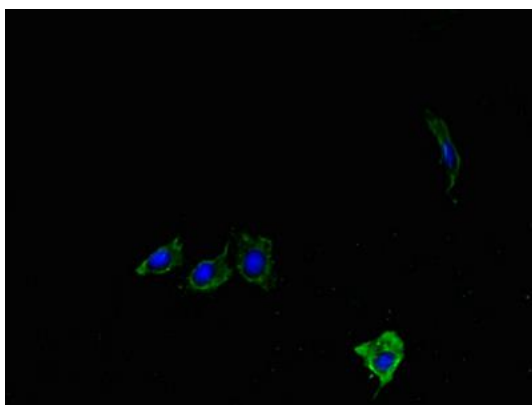
Immunogen:

Recombinant Mouse Acyl-protein thioesterase 1 protein (1-230AA).

Storage:

Preservative: 0.03% Proclin 300. Constituents: 50% Glycerol, 0.01M PBS, PH 7.4

Product Images



Immunofluorescent analysis of HeLa cells using PACO28090 at dilution of 1:100 and Alexa Fluor 488-conjugated AffiniPure Goat Anti-Rabbit IgG(H+L).