

Map2k4 Antibody



PACO28138

Product Information

Size:

50ug

Reactivity:

Mouse, Rat, Human

Source:

Rabbit

Isotype:

IgG

Applications:

ELISA, WB

Recommended dilutions:

ELISA:1:2000-1:10000, WB:1:500-1:5000

Protein Background:**Gene ID:**

Map2k4

Uniprot

P47809

Synonyms:

Dual specificity mitogen-activated protein kinase kinase 4 (MAP kinase kinase 4) (MAPKK 4) (EC 2.7.12.2) (C-JUN N-terminal kinase kinase 1) (JNK kinase 1) (JNKK 1) (JNK-activating kinase 1) (MAPK/ERK kinase 4) (MEK 4) (SAPK/ERK kinase 1) (SEK1), Map2k4, Jnkk1 Mek4 Mkk4 Prkmk4 Sek1 Serk1 Skk1

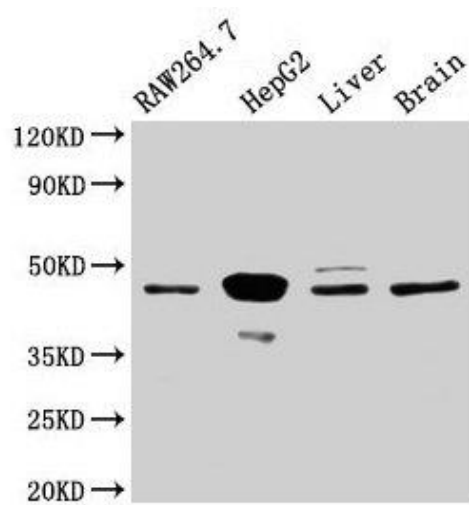
Immunogen:

Recombinant Mouse Dual specificity mitogen-activated protein kinase kinase 4 protein (2-397AA).

Storage:

Preservative: 0.03% Proclin 300. Constituents: 50% Glycerol, 0.01M PBS, PH 7.4

Product Images



Western Blot

Positive WB detected in: RAW264.7 whole cell lysate, HepG2 whole cell lysate, Rat liver tissue, Mouse brain tissue

All lanes: Map2k4 antibody at 3.2 μ g/ml

Secondary

Goat polyclonal to rabbit IgG at 1/50000 dilution

Predicted band size: 45 kDa

Observed band size: 45 kDa