

# PFDN5 Antibody



PACO28266

---

## Product Information

**Size:**

50ug

**Reactivity:**

Human

**Source:**

Rabbit

**Isotype:**

IgG

**Applications:**

ELISA, WB

**Recommended dilutions:**

ELISA:1:2000-1:10000, WB:1:500-1:5000

**Protein Background:**

Binds specifically to cytosolic chaperonin (c-CPN) and transfers target proteins to it. Binds to nascent polypeptide chain and promotes folding in an environment in which there are many competing pathways for nonnative proteins.

**Gene ID:**

PFDN5

**Uniprot**

Q99471

**Synonyms:**

Prefoldin subunit 5 (Myc modulator 1) (c-Myc-binding protein Mm-1), PFDN5, MM1 PFD5

**Immunogen:**

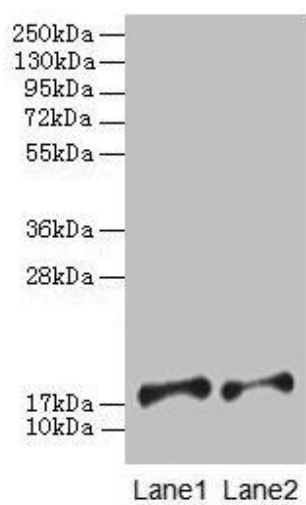
Recombinant Human Prefoldin subunit 5 protein (2-154AA).

**Storage:**

Preservative: 0.03% Proclin 300. Constituents: 50% Glycerol, 0.01M PBS, PH 7.4

## Product Images

---



### Western blot

All lanes: PFDN5 antibody at 2 $\mu$ g/ml

Lane 1: EC109 whole cell lysate

Lane 2: 293T whole cell lysate

Secondary

Goat polyclonal to rabbit IgG at 1/15000 dilution

Predicted band size: 18, 8, 13 kDa

Observed band size: 18 kDa

.