

MMGT1 Antibody



PACO28290

Product Information

Size:

50ug

Reactivity:

Human

Source:

Rabbit

Isotype:

IgG

Applications:

ELISA, WB, IF

Recommended dilutions:

ELISA:1:2000-1:10000, WB:1:500-1:5000,
IF:1:50-1:200

Protein Background:

Mediates Mg²⁺ transport.

Gene ID:

MMGT1

Uniprot

Q8N4V1

Synonyms:

Membrane magnesium transporter 1 (ER membrane protein complex subunit 5) (Transmembrane protein 32), MMGT1, EMC5 TMEM32

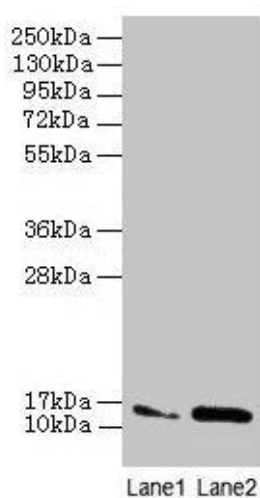
Immunogen:

Recombinant Human Membrane magnesium transporter 1 protein (66-131AA).

Storage:

Preservative: 0.03% Proclin 300. Constituents: 50% Glycerol, 0.01M PBS, PH 7.4

Product Images



Western blot

All lanes: MMGT1 antibody at 12 μ g/ml

Lane 1: Hela whole cell lysate

Lane 2: 293T whole cell lysate

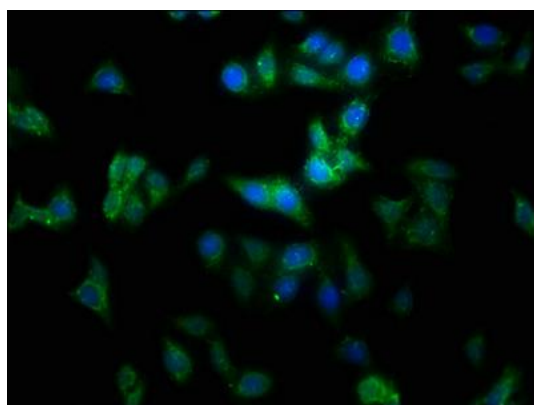
Secondary

Goat polyclonal to rabbit IgG at 1/10000 dilution

Predicted band size: 15, 22 kDa

Observed band size: 15 kDa

.



Immunofluorescence staining of HepG2 cells with PACO28290 at 1:100, counter-stained with DAPI. The cells were fixed in 4% formaldehyde, permeabilized using 0.2% Triton X-100 and blocked in 10% normal Goat Serum. The cells were then incubated with the antibody overnight at 4°C. The secondary antibody was Alexa Fluor 488-conjugated AffiniPure Goat Anti-Rabbit IgG(H+L).