

PACO28306

Product Information

Size:

50ug

Reactivity:

Human

Source:

Rabbit

Isotype:

IgG

Applications:

ELISA, IHC, IF

Recommended dilutions:

ELISA:1:2000-1:10000, IHC:1:20-1:200,
IF:1:50-1:200

Protein Background:

Required for normal utilization of mannose-dolichol phosphate (Dol-P-Man) in the synthesis of N-linked and O-linked oligosaccharides and GPI anchors.

Gene ID:

MPDU1

Uniprot

O75352

Synonyms:

Mannose-P-dolichol utilization defect 1 protein (Suppressor of Lec15 and Lec35 glycosylation mutation homolog) (SL15), MPDU1

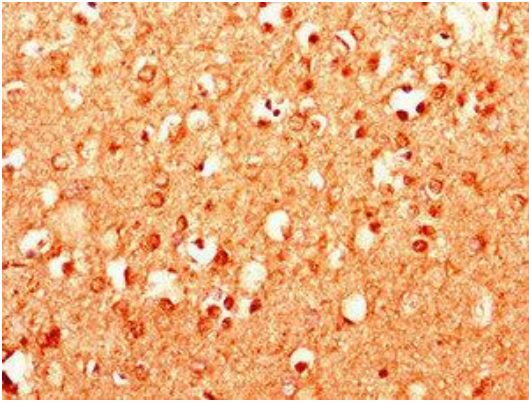
Immunogen:

Recombinant Human Mannose-P-dolichol utilization defect 1 protein (1-36AA).

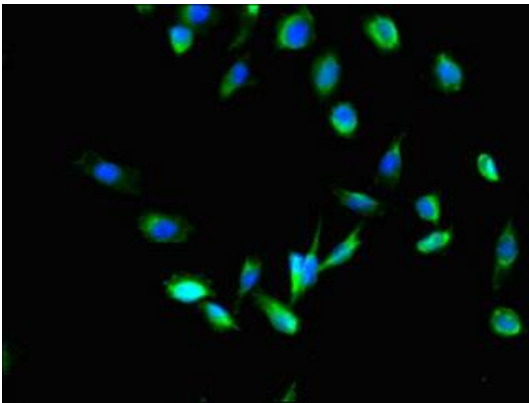
Storage:

Preservative: 0.03% Proclin 300. Constituents: 50% Glycerol, 0.01M PBS, PH 7.4

Product Images



Immunohistochemistry of paraffin-embedded human brain tissue using PACO28306 at dilution of 1:100.



Immunofluorescent analysis of U251 cells using PACO28306 at dilution of 1:100 and Alexa Fluor 488-conjugated AffiniPure Goat Anti-Rabbit IgG(H+L).