

# MRPL33 Antibody



PACO28350

---

## Product Information

**Size:**

50ug

**Reactivity:**

Human

**Source:**

Rabbit

**Isotype:**

IgG

**Applications:**

ELISA, IHC

**Recommended dilutions:**

ELISA:1:2000-1:10000, IHC:1:20-1:200

**Protein Background:**

mitochondrial inner membrane, mitochondrial large ribosomal subunit, structural constituent of ribosome, mitochondrial translation, mitochondrial translational elongation, mitochondrial translational initiation, mitochondrial translational termination, organelle organization.

**Gene ID:**

MRPL33

**Uniprot**

O75394

**Synonyms:**

39S ribosomal protein L33, mitochondrial (L33mt) (MRP-L33) (Mitochondrial large ribosomal subunit protein bL33m), MRPL33, C2orf1

**Immunogen:**

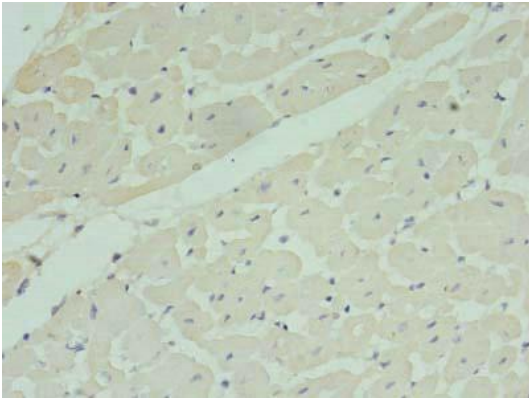
Recombinant Human 39S ribosomal protein L33, mitochondrial protein (1-65AA).

**Storage:**

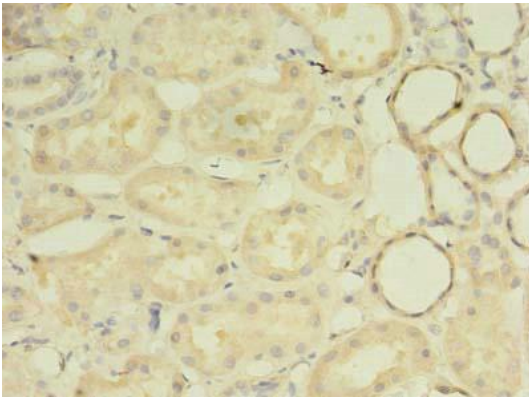
Preservative: 0.03% Proclin 300. Constituents: 50% Glycerol, 0.01M PBS, PH 7.4

## Product Images

---



Immunohistochemistry of paraffin-embedded human heart tissue using PACO28350 at dilution of 1:100.



Immunohistochemistry of paraffin-embedded human kidney tissue using PACO28350 at dilution of 1:100.