

MRPL55 Antibody



PACO28366

Product Information

Size:

50ug

Reactivity:

Human

Source:

Rabbit

Isotype:

IgG

Applications:

ELISA, WB, IHC

Recommended dilutions:

ELISA:1:2000-1:10000, WB:1:500-1:5000,
IHC:1:20-1:200

Protein Background:

Component of the mitochondrial ribosome large subunit (39S) which comprises a 16S rRNA and about 50 distinct proteins.

Gene ID:

MRPL55

Uniprot

Q7Z7F7

Synonyms:

39S ribosomal protein L55, mitochondrial (L55mt) (MRP-L55) (Mitochondrial large ribosomal subunit protein bL31m) (Mitochondrial large ribosomal subunit protein mL55), MRPL55

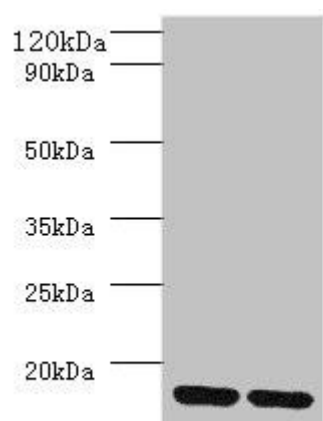
Immunogen:

Recombinant Human 39S ribosomal protein L55, mitochondrial protein (34-128AA).

Storage:

Preservative: 0.03% Proclin 300. Constituents: 50% Glycerol, 0.01M PBS, PH 7.4

Product Images



Western blot

All lanes: MRPL55 antibody at 2 μ g/ml

Lane 1: K562 whole cell lysate

Lane 2: PC-3 whole cell lysate

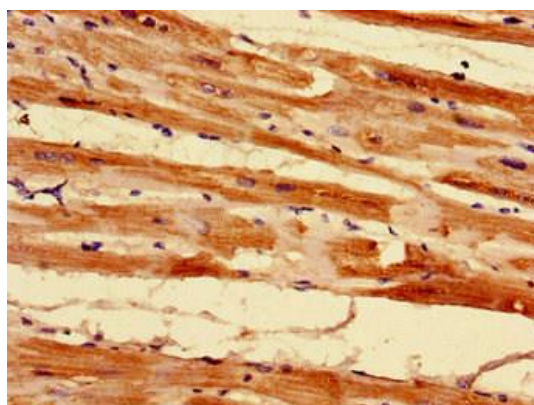
Secondary

Goat polyclonal to rabbit IgG at 1/10000 dilution

Predicted band size: 16, 19 kDa

Observed band size: 16 kDa

.



Immunohistochemistry of paraffin-embedded human heart tissue using PACO28366 at dilution of 1:100.