

# MRPS10 Antibody



PACO28370

---

## Product Information

**Size:**

50ug

**Reactivity:**

Human

**Source:**

Rabbit

**Isotype:**

IgG

**Applications:**

ELISA, IHC

**Recommended dilutions:**

ELISA:1:2000-1:10000, IHC:1:20-1:200

**Protein Background:**

mitochondrial inner membrane, mitochondrion, mitochondrial translation, mitochondrial translational elongation, mitochondrial translational initiation, mitochondrial translational termination, mitophagy in response to mitochondrial depolarization, organelle organization, positive regulation of defense response to virus by host, xenophagy.

**Gene ID:**

MRPS10

**Uniprot**

P82664

**Synonyms:**

28S ribosomal protein S10, mitochondrial (MRP-S10) (S10mt) (Mitochondrial small ribosomal subunit protein uS10m), MRPS10

**Immunogen:**

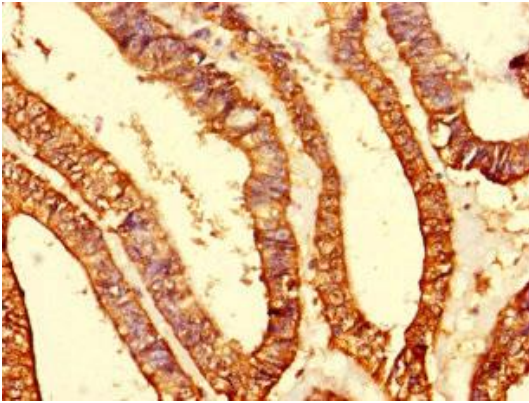
Recombinant Human 28S ribosomal protein S10, mitochondrial protein (1-201AA).

**Storage:**

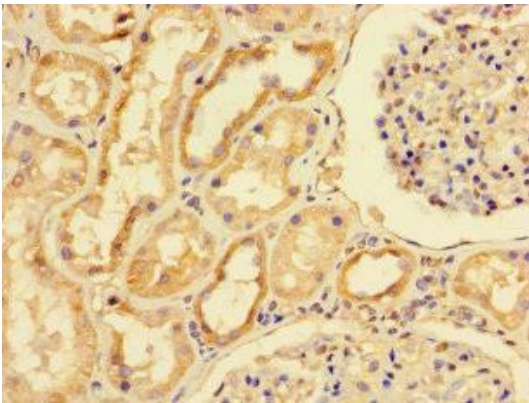
Preservative: 0.03% Proclin 300. Constituents: 50% Glycerol, 0.01M PBS, PH 7.4

## Product Images

---



Immunohistochemistry of paraffin-embedded human endometrial cancer using PACO28370 at dilution of 1:100.



Immunohistochemistry of paraffin-embedded human kidney tissue using PACO28370 at dilution of 1:100.