

Ms4a1 Antibody



PACO28394

Product Information

Size:

50ug

Reactivity:

Mouse, Human

Source:

Rabbit

Isotype:

IgG

Applications:

ELISA, WB

Recommended dilutions:

ELISA:1:2000-1:10000, WB:1:1000-1:5000

Protein Background:

This protein may be involved in the regulation of B-cell activation and proliferation.

Gene ID:

Ms4a1

Uniprot

P19437

Synonyms:

B-lymphocyte antigen CD20 (B-cell differentiation antigen Ly-44) (Lymphocyte antigen 44) (Membrane-spanning 4-domains subfamily A member 1) (CD antigen CD20), Ms4a1, Cd20 Ly-44 Ms4a2

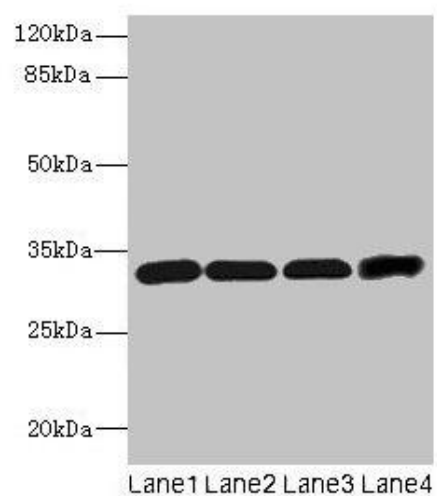
Immunogen:

Recombinant Mouse B-lymphocyte antigen CD20 protein (111-291AA).

Storage:

Preservative: 0.03% Proclin 300. Constituents: 50% Glycerol, 0.01M PBS, PH 7.4

Product Images



Western blot

All lanes: Ms4a1 antibody at 4 μ g/ml

Lane 1: Hela whole cell lysate

Lane 2: Jurkat whole cell lysate

Lane 3: 293T whole cell lysate

Lane 4: HL60 whole cell lysate

Secondary

Goat polyclonal to rabbit IgG at 1/10000 dilution

Predicted band size: 32 kDa

Observed band size: 32 kDa

.