

PACO28698

Product Information

Size:

50ug

Reactivity:

Human

Source:

Rabbit

Isotype:

IgG

Applications:

ELISA, WB, IHC, IF

Recommended dilutions:

ELISA:1:2000-1:10000, WB:1:1000-1:5000,
IHC:1:100-1:1000, IF:1:50-1:200

Protein Background:

Actins are highly conserved proteins that are involved in various types of cell motility and are ubiquitously expressed in all eukaryotic cells.

Gene ID:

ACTB

Uniprot

P60709

Synonyms:

Actin, cytoplasmic 1 (Beta-actin) [Cleaved into: Actin, cytoplasmic 1, N-terminally processed], ACTB

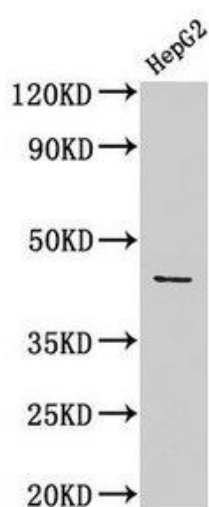
Immunogen:

Recombinant Human Actin, cytoplasmic 1 protein (102-375AA).

Storage:

Preservative: 0.03% Proclin 300. Constituents: 50% Glycerol, 0.01M PBS, PH 7.4

Product Images



Western Blot

Positive WB detected in: HepG2 whole cell lysate

All lanes: ACTB antibody at 1:1000

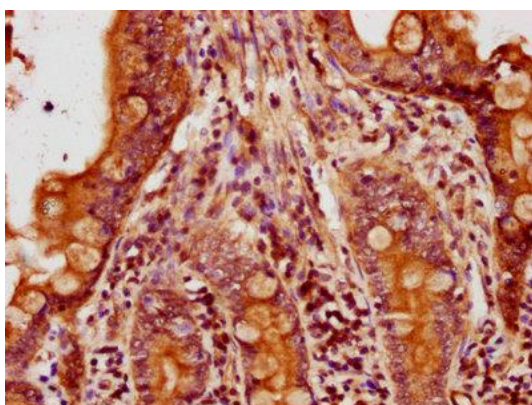
Secondary

Goat polyclonal to rabbit IgG at 1/50000 dilution

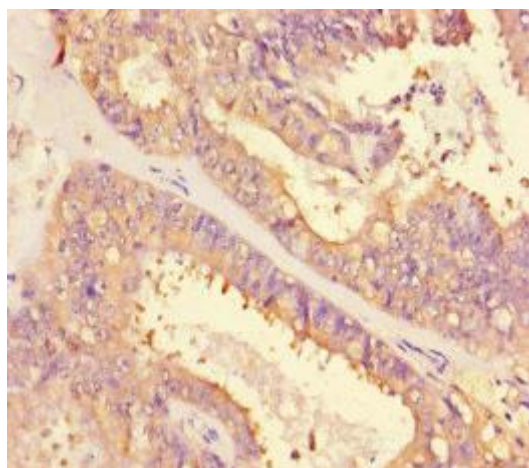
Predicted band size: 42 kDa

Observed band size: 42 kDa

.



IHC image of PACO28698 diluted at 1:500 and staining in paraffin-embedded human small intestine tissue performed on a Leica Bond™ system. After dewaxing and hydration, antigen retrieval was mediated by high pressure in a citrate buffer (pH 6.0). Section was blocked with 10% normal goat serum 30min at RT. Then primary antibody (1% BSA) was incubated at 4°C overnight. The primary is detected by a biotinylated secondary antibody and visualized using an HRP conjugated SP system.



Immunohistochemistry of paraffin-embedded human endometrial cancer using PACO28698 at dilution of 1:100.