

# RPS18 Antibody



PACO28730

---

## Product Information

**Size:**

50ug

**Reactivity:**

Human

**Source:**

Rabbit

**Isotype:**

IgG

**Applications:**

ELISA, WB

**Recommended dilutions:**

ELISA:1:2000-1:10000, WB:1:1000-1:5000

**Protein Background:**

Located at the top of the head of the 40S subunit, it contacts several helices of the 18S rRNA.

**Gene ID:**

RPS18

**Uniprot**

P62269

**Synonyms:**

40S ribosomal protein S18 (Ke-3) (Ke3) (Small ribosomal subunit protein uS13), RPS18, D6S218E

**Immunogen:**

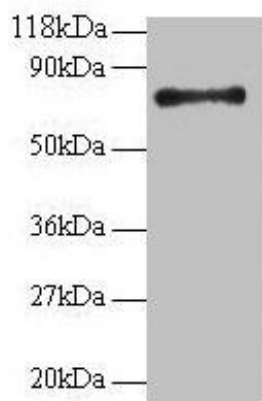
Recombinant Human 40S ribosomal protein S18 protein (2-152AA).

**Storage:**

Preservative: 0.03% Proclin 300. Constituents: 50% Glycerol, 0.01M PBS, PH 7.4

## Product Images

---



### Western blot

All lanes: RPS18 antibody at 2 $\mu$ g/ml + 293T whole cell lysate

Secondary

Goat polyclonal to rabbit IgG at 1/15000 dilution

Predicted band size: 18 kDa

Observed band size: 75 kDa