

PCOLCE2 Antibody



PACO28838

Product Information

Size:

50ug

Reactivity:

Human

Source:

Rabbit

Isotype:

IgG

Applications:

ELISA, WB, IHC, IF

Recommended dilutions:

ELISA:1:2000-1:10000, WB:1:500-1:2000,
IHC:1:20-1:200, IF:1:50-1:200

Protein Background:

Binds to the C-terminal propeptide of types I and II procollagens and may enhance the cleavage of that propeptide by BMP1.

Gene ID:

PCOLCE2

Uniprot

Q9UKZ9

Synonyms:

Procollagen C-endopeptidase enhancer 2 (Procollagen COOH-terminal proteinase enhancer 2) (PCPE-2) (Procollagen C-proteinase enhancer 2), PCOLCE2, PCPE2

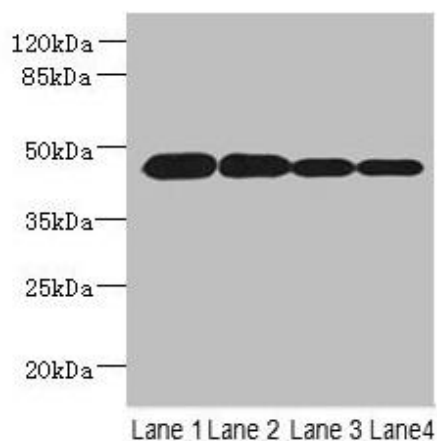
Immunogen:

Recombinant Human Procollagen C-endopeptidase enhancer 2 protein (24-415AA).

Storage:

Preservative: 0.03% Proclin 300. Constituents: 50% Glycerol, 0.01M PBS, PH 7.4

Product Images



Western blot

All lanes: PCOLCE2 antibody at 8 μ g/ml

Lane 1: MCF-7 whole cell lysate

Lane 2: A549 whole cell lysate

Lane 3: HCT116 whole cell lysate

Lane 4: Human high value serum

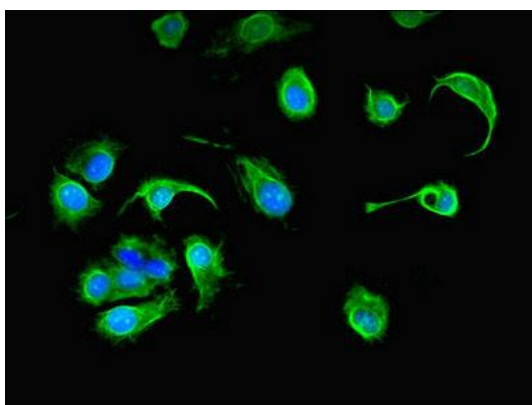
Secondary

Goat polyclonal to rabbit IgG at 1/10000 dilution

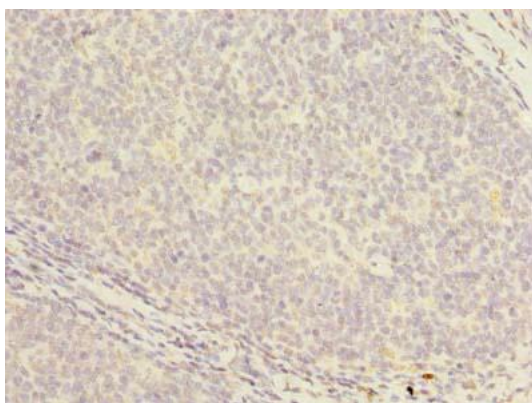
Predicted band size: 46 kDa

Observed band size: 46 kDa

.



Immunofluorescent analysis of MCF-7 cells using PACO28838 at dilution of 1:100 and Alexa Fluor 488-conjugated AffiniPure Goat Anti-Rabbit IgG(H+L).



Immunohistochemistry of paraffin-embedded human tonsil tissue using PACO28838 at dilution of 1:100.