

# PCTP Antibody



PACO28854

---

## Product Information

**Size:**

50ug

**Reactivity:**

Human

**Source:**

Rabbit

**Isotype:**

IgG

**Applications:**

ELISA, WB, IHC, IF

**Recommended dilutions:**

ELISA:1:2000-1:10000, WB:1:500-1:5000,  
IHC:1:20-1:200, IF:1:50-1:200

**Protein Background:**

Catalyzes the transfer of phosphatidylcholine between membranes. Binds a single lipid molecule.

**Gene ID:**

PCTP

**Uniprot**

Q9UKL6

**Synonyms:**

Phosphatidylcholine transfer protein (PC-TP) (START domain-containing protein 2) (StARD2) (StAR-related lipid transfer protein 2), PCTP, STARD2

**Immunogen:**

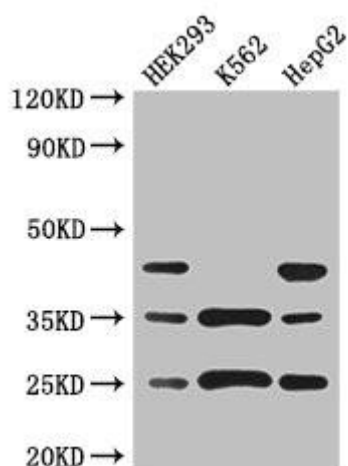
Recombinant Human Phosphatidylcholine transfer protein (1-214AA).

**Storage:**

Preservative: 0.03% Proclin 300. Constituents: 50% Glycerol, 0.01M PBS, PH 7.4

## Product Images

---



### Western Blot

Positive WB detected in: HEK293 whole cell lysate, K562 whole cell lysate, HepG2 whole cell lysate

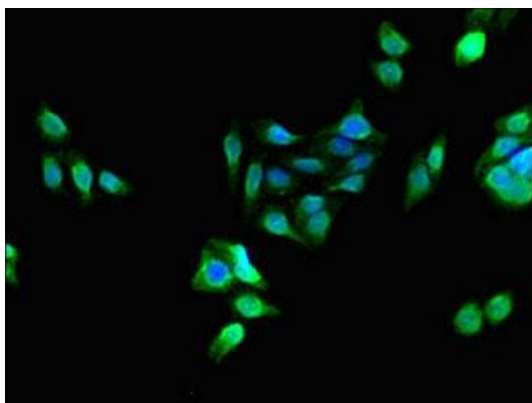
All lanes: PCTP antibody at 3 $\mu$ g/ml

Secondary

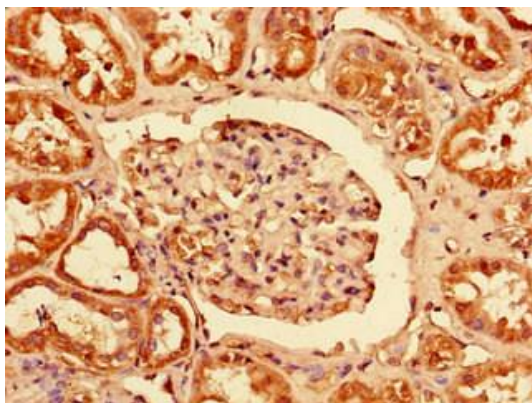
Goat polyclonal to rabbit IgG at 1/50000 dilution

Predicted band size: 25, 17 kDa

Observed band size: 25, 35, 45 kDa



Immunofluorescent analysis of HepG2 cells using PACO28854 at dilution of 1:100 and Alexa Fluor 488-conjugated AffiniPure Goat Anti-Rabbit IgG(H+L).



Immunohistochemistry of paraffin-embedded human kidney tissue using PACO28854 at dilution of 1:100.