

Pdia2 Antibody



PACO28874

Product Information

Size:

50ug

Reactivity:

Mouse, Human

Source:

Rabbit

Isotype:

IgG

Applications:

ELISA, WB

Recommended dilutions:

ELISA:1:2000-1:10000, WB:1:1000-1:5000

Protein Background:

Acts as an intracellular estrogen-binding protein. May be involved in modulating cellular levels and biological functions of estrogens in the pancreas. May act as a chaperone that inhibits aggregation of misfolded proteins.

Gene ID:

Pdia2

Uniprot

D3Z6P0

Synonyms:

Protein disulfide-isomerase A2 (EC 5.3.4.1) (PDIp), Pdia2, Pdip

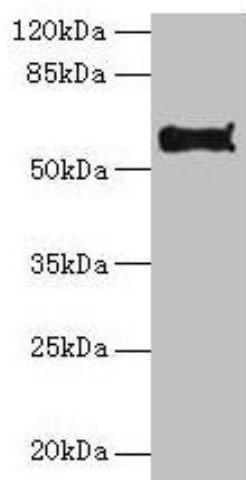
Immunogen:

Recombinant Mouse Protein disulfide-isomerase A2 protein (21-527AA).

Storage:

Preservative: 0.03% Proclin 300. Constituents: 50% Glycerol, 0.01M PBS, PH 7.4

Product Images



Western blot

All lanes: Pdia2 antibody at 10 μ g/ml + HeLa whole cell lysate

Secondary

Goat polyclonal to rabbit IgG at 1/10000 dilution

Predicted band size: 59, 58 kDa

Observed band size: 59 kDa

.