

PGM1 Antibody



PACO28906

Product Information

Size:

50ug

Reactivity:

Human

Source:

Rabbit

Isotype:

IgG

Applications:

ELISA, WB, IHC, IF

Recommended dilutions:

ELISA:1:2000-1:10000, WB:1:500-1:2000,
IHC:1:20-1:200, IF:1:50-1:200

Protein Background:

This enzyme participates in both the breakdown and synthesis of glucose.

Gene ID:

PGM1

Uniprot

P36871

Synonyms:

Phosphoglucomutase-1 (PGM 1) (EC 5.4.2.2) (Glucose phosphomutase 1), PGM1

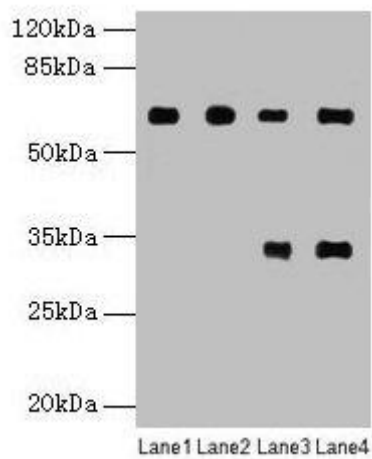
Immunogen:

Recombinant Human Phosphoglucomutase-1 protein (1-562AA).

Storage:

Preservative: 0.03% Proclin 300. Constituents: 50% Glycerol, 0.01M PBS, PH 7.4

Product Images



Western blot

All lanes: PGM1 antibody at 6 μ g/ml

Lane 1: U251 whole cell lysate

Lane 2: U937 whole cell lysate

Lane 3: Jurkat whole cell lysate

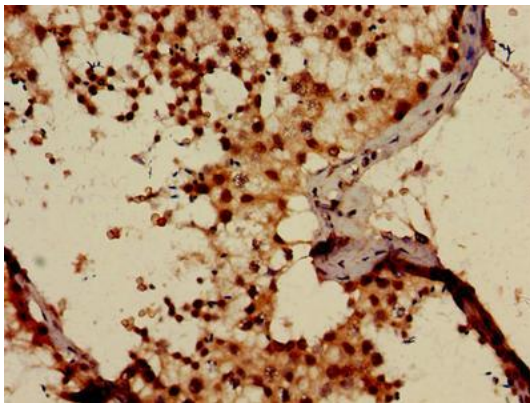
Lane 4: Hela whole cell lysate

Secondary

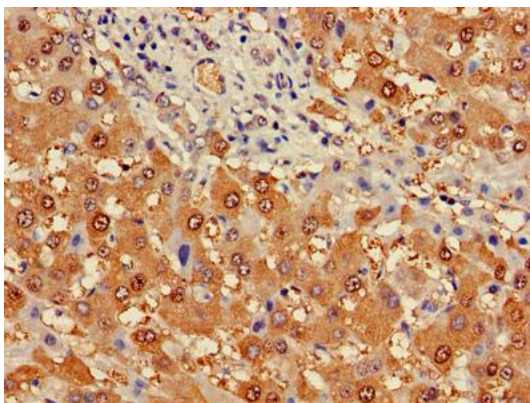
Goat polyclonal to rabbit IgG at 1/10000 dilution

Predicted band size: 62, 64, 41 kDa

Observed band size: 62 kDa



Immunohistochemistry of paraffin-embedded human testis tissue using PACO28906 at dilution of 1:100.



Immunohistochemistry of paraffin-embedded human liver cancer using PACO28906 at dilution of 1:100.