

# Plbd2 Antibody



PACO28990

---

## Product Information

**Size:**

50ug

**Reactivity:**

Mouse

**Source:**

Rabbit

**Isotype:**

IgG

**Applications:**

ELISA, WB

**Recommended dilutions:**

ELISA:1:2000-1:10000, WB:1:1000-1:5000

**Protein Background:**

Putative phospholipase.

**Gene ID:**

Plbd2

**Uniprot**

Q3TCN2

**Synonyms:**

Putative phospholipase B-like 2 (EC 3.1.1. -) (66.3 kDa protein) (76 kDa protein) (p76) (LAMA-like protein 2) (Lamina ancestor homolog 2) (Phospholipase B domain-containing protein 2) [Cleaved into: Putative phospholipase B-like 2 28 kDa form; Putative phospholipase B-like 2 40 kDa form; Putative phospholipase B-like 2 15 kDa form], Plbd2

**Immunogen:**

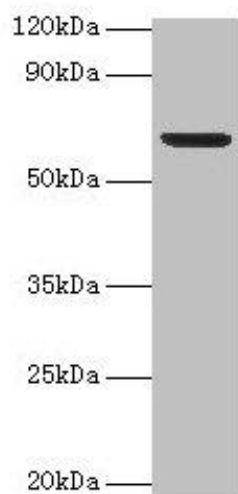
Recombinant Mouse Putative phospholipase B-like 2 protein (47-594AA).

**Storage:**

Preservative: 0.03% Proclin 300. Constituents: 50% Glycerol, 0.01M PBS, PH 7.4

## Product Images

---



### Western blot

All lanes: Plbd2 antibody at 2 $\mu$ g/ml + Mouse brain tissue

Secondary

Goat polyclonal to rabbit IgG at 1/15000 dilution

Predicted band size: 67, 50 kDa

Observed band size: 67 kDa