

PLP1 Antibody



PACO29010

Product Information

Size:

50ug

Reactivity:

Human

Source:

Rabbit

Isotype:

IgG

Applications:

ELISA, WB, IHC, IF

Recommended dilutions:

ELISA:1:2000-1:10000, WB:1:500-1:2000,
IHC:1:20-1:200, IF:1:50-1:200

Protein Background:

This is the major myelin protein from the central nervous system. It plays an important role in the formation or maintenance of the multilamellar structure of myelin.

Gene ID:

PLP1

Uniprot

P60201

Synonyms:

Myelin proteolipid protein (PLP) (Lipophilin), PLP1, PLP

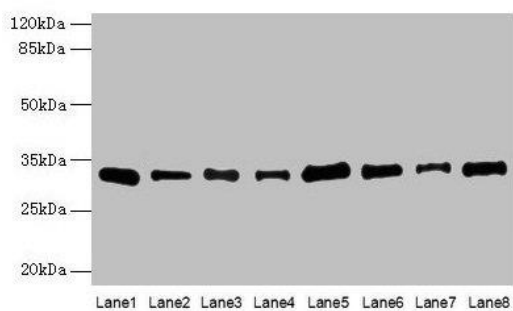
Immunogen:

Recombinant Human Myelin proteolipid protein (143-197AA).

Storage:

Preservative: 0.03% Proclin 300. Constituents: 50% Glycerol, 0.01M PBS, PH 7.4

Product Images



Western blot

All lanes: PLP1 antibody at 4 μ g/ml

Lane 1: HeLa whole cell lysate

Lane 2: HL60 whole cell lysate

Lane 3: K562 whole cell lysate

Lane 4: THP-1 whole cell lysate

Lane 5: U937 whole cell lysate

Lane 6: A549 whole cell lysate

Lane 7: Caco-2 whole cell lysate

Lane 8: HepG2 whole cell lysate

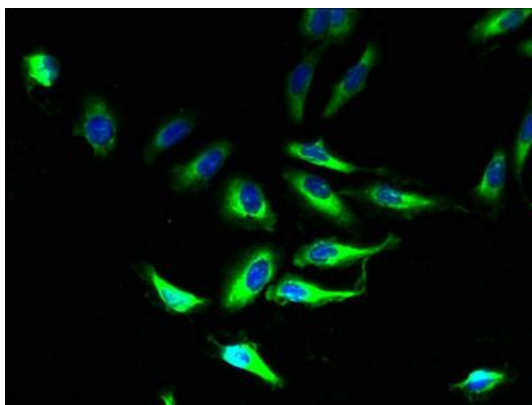
Secondary

Goat polyclonal to rabbit IgG at 1/10000 dilution

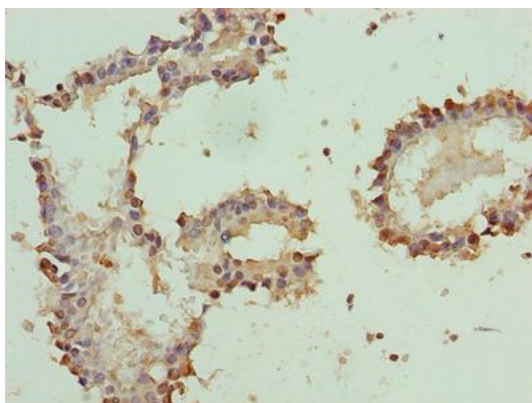
Predicted band size: 31, 27 kDa

Observed band size: 31 kDa

.



Immunofluorescent analysis of HeLa cells using PACO29010 at dilution of 1:100 and Alexa Fluor 488-conjugated AffiniPure Goat Anti-Rabbit IgG(H+L).



Immunohistochemistry of paraffin-embedded human breast cancer using PACO29010 at dilution of 1:100.