

PMM1 Antibody



PACO29022

Product Information

Size:

50ug

Reactivity:

Human, Mouse

Source:

Rabbit

Isotype:

IgG

Applications:

ELISA, WB, IHC

Recommended dilutions:

ELISA:1:2000-1:10000, WB:1:500-1:5000,
IHC:1:20-1:200

Protein Background:

Involved in the synthesis of the GDP-mannose and dolichol-phosphate-mannose required for a number of critical mannosyl transfer reactions. In addition, may be responsible for the degradation of glucose-1,6-bisphosphate in ischemic brain.

Gene ID:

PMM1

Uniprot

Q92871

Synonyms:

Phosphomannomutase 1 (PMM 1) (EC 5.4.2.8) (PMMH-22), PMM1, PMMH22

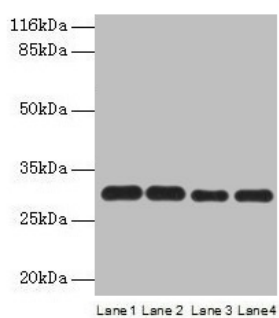
Immunogen:

Recombinant Human Phosphomannomutase 1 protein (2-262AA).

Storage:

Preservative: 0.03% Proclin 300. Constituents: 50% Glycerol, 0.01M PBS, PH 7.4

Product Images



Western blot

All lanes: PMM1 antibody at 2 μ g/ml

Lane 1: HepG2 whole cell lysate

Lane 2: NIH/3T3 whole cell lysate

Lane 3: 293T whole cell lysate

Lane 4: Mouse brain tissue

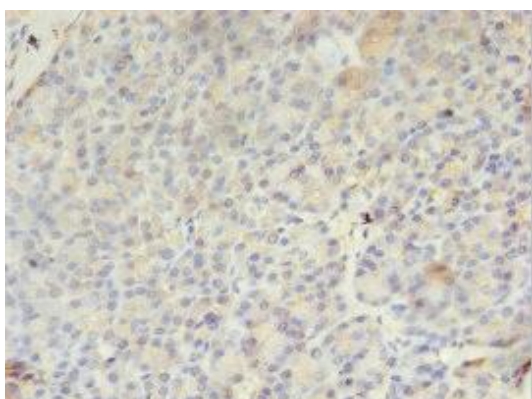
Secondary

Goat polyclonal to rabbit IgG at 1/10000 dilution

Predicted band size: 30 kDa

Observed band size: 30 kDa

.



Immunohistochemistry of paraffin-embedded human pancreatic tissue using PACO29022 at dilution of 1:100.