

PNLIPRP3 Antibody



PACO29030

Product Information

Size:

50ug

Reactivity:

Human, Mouse

Source:

Rabbit

Isotype:

IgG

Applications:

ELISA, WB, IHC

Recommended dilutions:

ELISA:1:2000-1:10000, WB:1:500-1:5000,
IHC:1:20-1:200

Protein Background:

Gene ID:

PNLIPRP3

Uniprot

Q17RR3

Synonyms:

Pancreatic lipase-related protein 3 (PL-RP3) (EC 3.1.1.3), PNLIPRP3

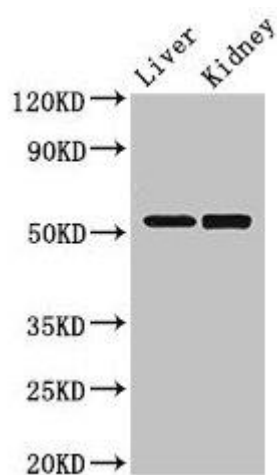
Immunogen:

Recombinant Human Pancreatic lipase-related protein 3 protein (201-467AA).

Storage:

Preservative: 0.03% Proclin 300. Constituents: 50% Glycerol, 0.01M PBS, PH 7.4

Product Images



Western Blot

Positive WB detected in: Mouse liver tissue, Mouse kidney tissue

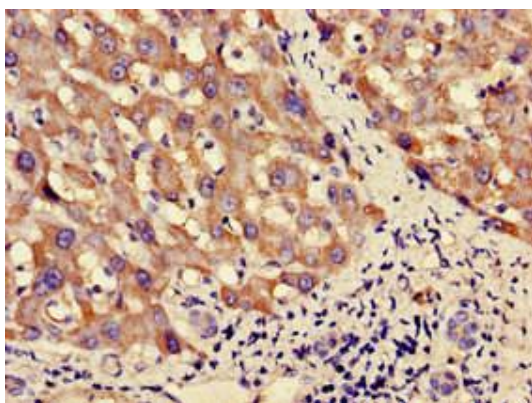
All lanes: PNLIPRP3 antibody at 3.5 μ g/ml

Secondary

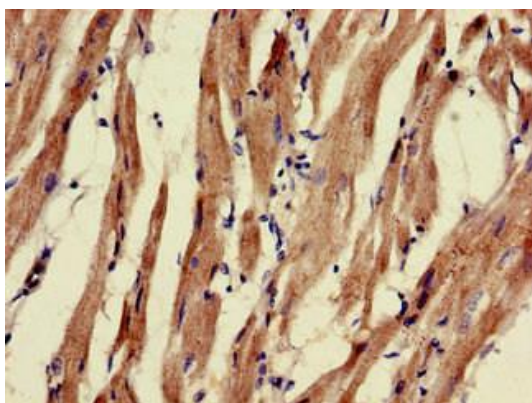
Goat polyclonal to rabbit IgG at 1/50000 dilution

Predicted band size: 53 kDa

Observed band size: 53 kDa



Immunohistochemistry of paraffin-embedded human liver cancer using PACO29030 at dilution of 1:100.



Immunohistochemistry of paraffin-embedded human heart tissue using PACO29030 at dilution of 1:100.