

PACO29083

Product Information

Size:

50ug

Reactivity:

Human, Mouse

Source:

Rabbit

Isotype:

IgG

Applications:

ELISA, WB, IHC

Recommended dilutions:

ELISA:1:2000-1:10000, WB:1:1000-1:5000,
IHC:1:500-1:1000

Protein Background:

ACTH stimulates the adrenal glands to release cortisol. MSH (melanocyte-stimulating hormone) increases the pigmentation of skin by increasing melanin production in melanocytes. Beta-endorphin and Met-enkephalin are endogenous opiates.

Gene ID:

POMC

Uniprot

P01189

Synonyms:

Pro-opiomelanocortin (POMC) (Corticotropin-lipotropin) [Cleaved into: NPP; Melanotropin gamma (Gamma-MSH); Potential peptide; Corticotropin (Adrenocorticotrophic hormone) (ACTH); Melanocyte-stimulating hormone alpha (Alpha-MSH) (Melanotropin alpha); Corticotropin-like intermediary peptide (CLIP); Lipotropin beta (Beta-LPH); Lipotropin gamma (Gamma-LPH); Melanocyte-stimulating hormone beta (Beta-MSH) (Melanotropin beta); Beta-endorphin; Met-enkephalin], POMC

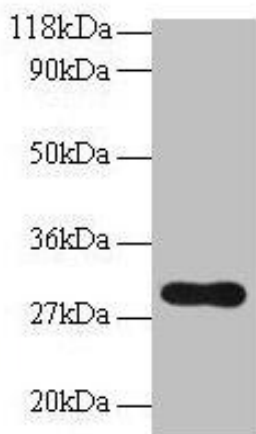
Immunogen:

Peptide sequence from Human Pro-opiomelanocortin protein.

Storage:

Preservative: 0.03% Proclin 300. Constituents: 50% Glycerol, 0.01M PBS, PH 7.4

Product Images



Western blot

All lanes: POMC antibody at 2 μ g/ml + NIH/3T3 whole cell lysate

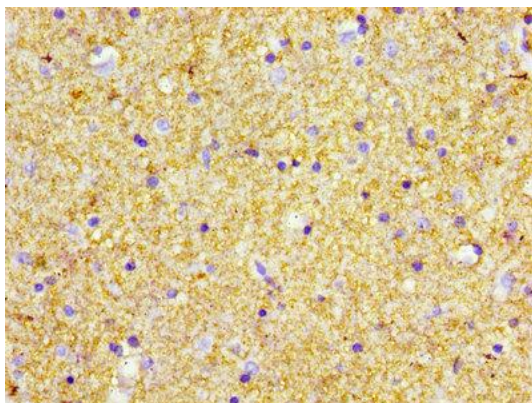
Secondary

Goat polyclonal to rabbit IgG at 1/10000 dilution

Predicted band size: 30 kDa

Observed band size: 30 kDa

.



IHC image of PACO29083 diluted at 1:600 and staining in paraffin-embedded human brain tissue performed on a Leica BondTM system. After dewaxing and hydration, antigen retrieval was mediated by high pressure in a citrate buffer (pH 6.0). Section was blocked with 10% normal goat serum 30min at RT. Then primary antibody (1% BSA) was incubated at 4 $^{\circ}$ C overnight. The primary is detected by a biotinylated secondary antibody and visualized using an HRP conjugated SP system.