

PACO29112

Product Information

Size:

50ug

Reactivity:

Human, Mouse

Source:

Rabbit

Isotype:

IgG

Applications:

ELISA, WB, IHC

Recommended dilutions:

ELISA:1:2000-1:10000, WB:1:500-1:5000,
IHC:1:20-1:200

Protein Background:

PPIases accelerate the folding of proteins. It catalyzes the cis-trans isomerization of proline imidic peptide bonds in oligopeptides.

Gene ID:

PPIAL4G

Uniprot

P0DN37

Synonyms:

Peptidyl-prolyl cis-trans isomerase A-like 4G (PPIase A-like 4G) (EC 5.2.1.8)
(Peptidylprolyl cis-trans isomerase A-like 4), PPIAL4G

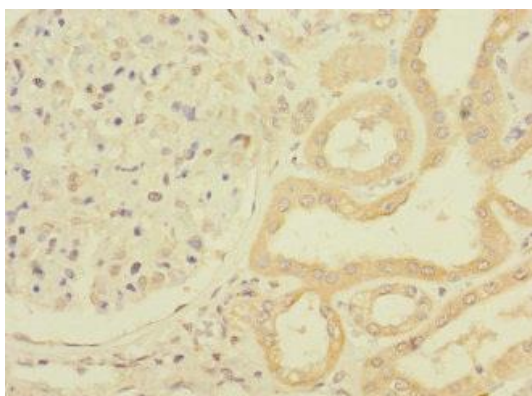
Immunogen:

Recombinant Human Peptidyl-prolyl cis-trans isomerase A-like 4G protein (1-164AA).

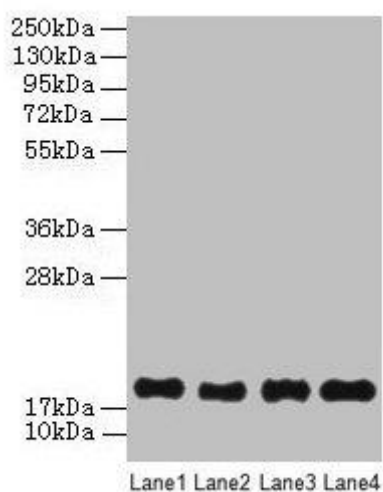
Storage:

Preservative: 0.03% Proclin 300. Constituents: 50% Glycerol, 0.01M PBS, PH 7.4

Product Images



Immunohistochemistry of paraffin-embedded human kidney tissue using PACO29112 at dilution of 1:100.



Western Blot

All lanes: PPIAL4G antibody at 6 μ g/ml

Lane 1: Mouse liver tissue

Lane 2: Mouse spleen tissue

Lane 3: Mouse lung tissue

Lane 4: Mouse kidney tissue

Secondary

Goat polyclonal to rabbit IgG at 1/10000 dilution

Predicted band size: 19 kDa

Observed band size: 19 kDa