

### Product Information

**Size:**

50ug

**Reactivity:**

Human

**Source:**

Rabbit

**Isotype:**

IgG

**Applications:**

ELISA, WB, IHC

**Recommended dilutions:**

ELISA:1:2000-1:10000, WB:1:500-1:2000,  
IHC:1:20-1:200

**Protein Background:**

PPIases accelerate the folding of proteins. It catalyzes the cis-trans isomerization of proline imidic peptide bonds in oligopeptides. Participates in pre-mRNA splicing. May play a role in the assembly of the U4/U5/U6 tri-snRNP complex, one of the building blocks of the spliceosome. May act as a chaperone.

**Gene ID:**

PPIH

**Uniprot**

O43447

**Synonyms:**

Peptidyl-prolyl cis-trans isomerase H (PPIase H) (EC 5.2.1.8) (Rotamase H) (Small nuclear ribonucleoprotein particle-specific cyclophilin H) (CypH) (U-snRNP-associated cyclophilin SnuCyp-20) (USA-CYP), PPIH, CYP20 CYPH

**Immunogen:**

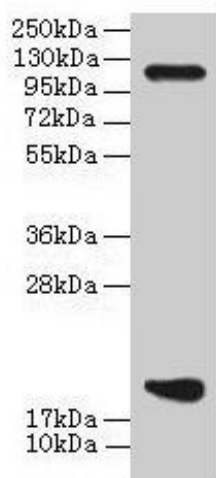
Recombinant Human Peptidyl-prolyl cis-trans isomerase H protein (2-177AA).

**Storage:**

Preservative: 0.03% Proclin 300. Constituents: 50% Glycerol, 0.01M PBS, PH 7.4

## Product Images

---



### Western blot

All lanes: PPIH antibody at 8 $\mu$ g/ml + THP-1 whole cell lysate

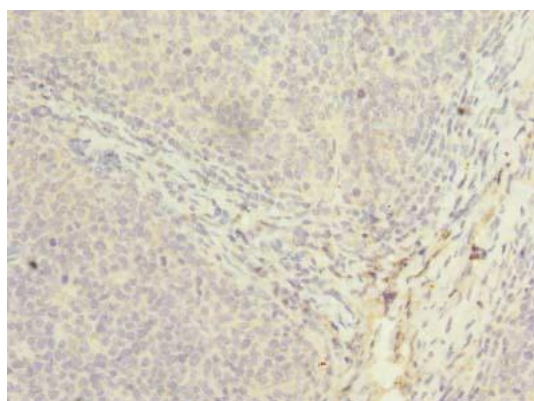
Secondary

Goat polyclonal to rabbit IgG at 1/10000 dilution

Predicted band size: 20, 15 kDa

Observed band size: 20 kDa

.



Immunohistochemistry of paraffin-embedded human tonsil tissue using PACO29116 at dilution of 1:100.