

Product Information

Size:

50ug

Reactivity:

Human

Source:

Rabbit

Isotype:

IgG

Applications:

ELISA, IHC, IF

Recommended dilutions:

ELISA:1:2000-1:10000, IHC:1:20-1:200,
IF:1:50-1:200

Protein Background:

Plays a role in boundary lubrication within articulating joints. Prevents protein deposition onto cartilage from synovial fluid by controlling adhesion-dependent synovial growth and inhibiting the adhesion of synovial cells to the cartilage surface. Isoform F plays a role as a growth factor acting on the primitive cells of both hematopoietic and endothelial cell lineages.

Gene ID:

PLPPR2

Uniprot

Q96GM1

Synonyms:

Phospholipid phosphatase-related protein type 2 (EC 3.1.3.4) (Lipid phosphate phosphatase-related protein type 2) (Plasticity-related gene 4 protein) (PRG-4), PLPPR2, LPPR2 PRG4

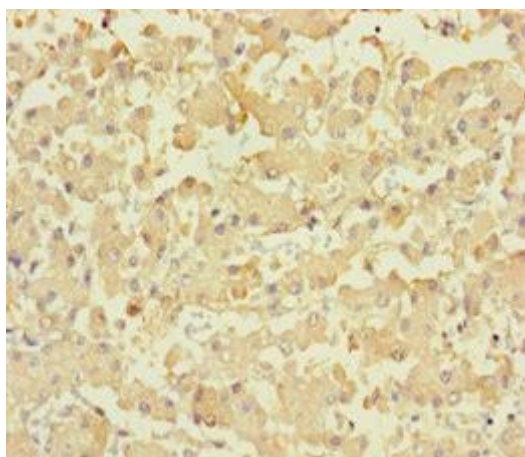
Immunogen:

Recombinant Human Lipid phosphate phosphatase-related protein type 2 protein (1-156AA).

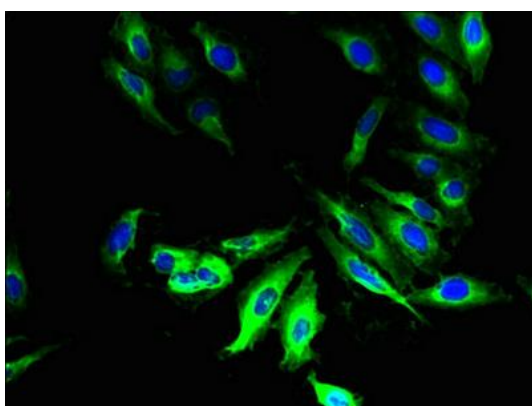
Storage:

Preservative: 0.03% Proclin 300. Constituents: 50% Glycerol, 0.01M PBS, PH 7.4

Product Images



Immunohistochemistry of paraffin-embedded human liver tissue using PACO29164 at dilution of 1:100.



Immunofluorescent analysis of HeLa cells using PACO29164 at dilution of 1:100 and Alexa Fluor 488-conjugated AffiniPure Goat Anti-Rabbit IgG(H+L).