

RPS11 Antibody

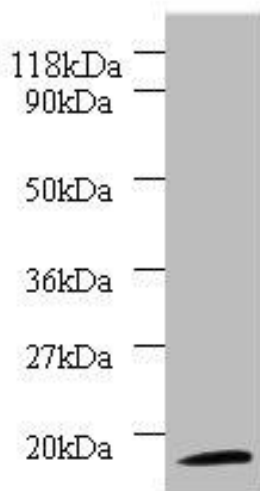


PACO29188

Product Information

Size: 50ug	Protein Background:
Reactivity: Human	Gene ID: RPS11
Source: Rabbit	Uniprot P62280
Isotype: IgG	Synonyms: 40S ribosomal protein S11 (Small ribosomal subunit protein uS17), RPS11
Applications: ELISA, WB, IHC	Immunogen: Recombinant Human 40S ribosomal protein S11 protein (2-158AA).
Recommended dilutions: ELISA:1:2000-1:10000, WB:1:1000-1:5000, IHC:1:20-1:200	Storage: Preservative: 0.03% Proclin 300. Constituents: 50% Glycerol, 0.01M PBS, PH 7.4

Product Images



Western blot

All lanes: 40S ribosomal protein S11 antibody at 2 μ g/ml + 293T whole cell lysate

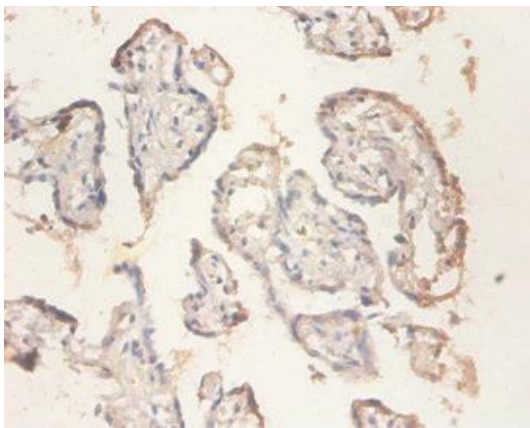
Secondary

Goat polyclonal to rabbit IgG at 1/10000 dilution

Predicted band size: 18 kDa

Observed band size: 18 kDa

.



Immunohistochemistry of paraffin-embedded human placenta tissue using PACO29188 at dilution of 1:100.