

PACO29216

---

## Product Information

**Size:**

50ug

**Reactivity:**

Human

**Source:**

Rabbit

**Isotype:**

IgG

**Applications:**

ELISA, IHC

**Recommended dilutions:**

ELISA:1:2000-1:10000, IHC:1:20-1:200

**Protein Background:****Gene ID:**

PRY

**Uniprot**

O14603

**Synonyms:**

PTPN13-like protein, Y-linked (Testis-specific PTP-BL-related Y protein), PRY; PRY2; PRYP3; PRYP4, PRY1 PTPN13LY; PTPN13LY2

**Immunogen:**

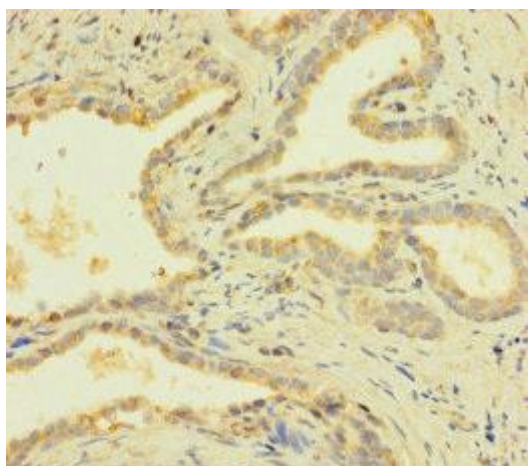
Recombinant Human PTPN13-like protein, Y-linked protein (13-147AA).

**Storage:**

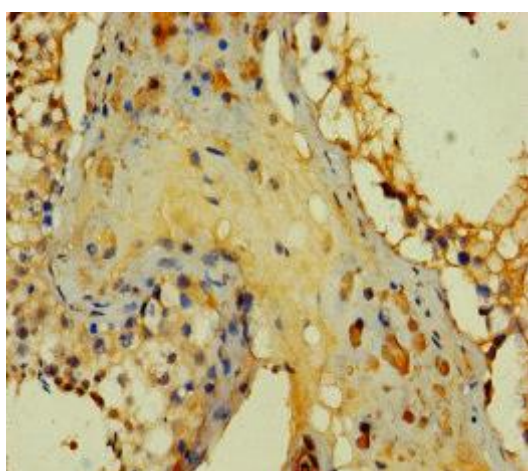
Preservative: 0.03% Proclin 300. Constituents: 50% Glycerol, 0.01M PBS, PH 7.4

## Product Images

---



Immunohistochemistry of paraffin-embedded human prostate cancer using PACO29216 at dilution of 1:100.



Immunohistochemistry of paraffin-embedded human testis tissue using PACO29216 at dilution of 1:100.