

## Product Information

**Size:**

50ug

**Reactivity:**

Human

**Source:**

Rabbit

**Isotype:**

IgG

**Applications:**

ELISA, WB

**Recommended dilutions:**

ELISA:1:2000-1:10000, WB:1:1000-1:5000

**Protein Background:**

extracellular region, female pregnancy.

**Gene ID:**

PSG6

**Uniprot**

Q00889

**Synonyms:**

Pregnancy-specific beta-1-glycoprotein 6 (PS-beta-G-6) (PSBG-6) (Pregnancy-specific glycoprotein 6) (Pregnancy-specific beta-1-glycoprotein 10) (PS-beta-G-10) (PSBG-10) (Pregnancy-specific glycoprotein 10) (Pregnancy-specific beta-1-glycoprotein 12) (PS-beta-G-12) (PSBG-12) (Pregnancy-specific glycoprotein 12), PSG6, CGM3 PSG10 PSG12 PSGGB

**Immunogen:**

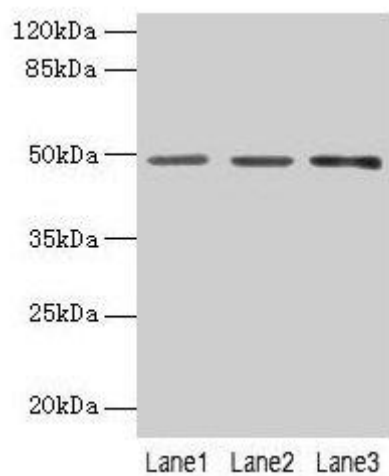
Recombinant Human Pregnancy-specific beta-1-glycoprotein 6 protein (35-300AA).

**Storage:**

Preservative: 0.03% Proclin 300. Constituents: 50% Glycerol, 0.01M PBS, PH 7.4

## Product Images

---



### Western blot

All lanes: PSG6 antibody at 6 $\mu$ g/ml

Lane 1: HepG2 whole cell lysate

Lane 2: 293T whole cell lysate

Lane 3: MCF-7 whole cell lysate

Secondary

Goat polyclonal to rabbit IgG at 1/10000 dilution

Predicted band size: 49, 48 kDa

Observed band size: 49 kDa