

RAB11A Antibody



PACO29308

Product Information

Size:

50ug

Reactivity:

Human

Source:

Rabbit

Isotype:

IgG

Applications:

ELISA, IHC

Recommended dilutions:

ELISA:1:2000-1:10000, IHC:1:20-1:200

Protein Background:

Gene ID:

RAB11A

Uniprot

P62491

Synonyms:

Ras-related protein Rab-11A (Rab-11) (YL8), RAB11A, RAB11

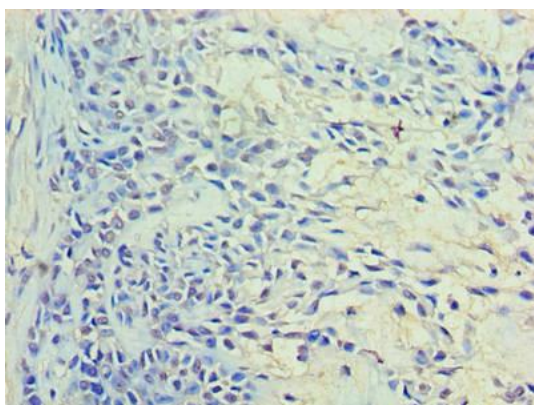
Immunogen:

Recombinant Human Ras-related protein Rab-11A protein (2-213AA).

Storage:

Preservative: 0.03% Proclin 300. Constituents: 50% Glycerol, 0.01M PBS, PH 7.4

Product Images



Immunohistochemistry of paraffin-embedded human breast cancer using PACO29308 at dilution of 1:100.