

RAB3B Antibody



PACO29332

Product Information

Size:

50ug

Reactivity:

Human, Mouse

Source:

Rabbit

Isotype:

IgG

Applications:

ELISA, WB, IHC

Recommended dilutions:

ELISA:1:2000-1:10000, WB:1:1000-1:5000,
IHC:1:20-1:200

Protein Background:

Protein transport. Probably involved in vesicular traffic.

Gene ID:

RAB3B

Uniprot

P20337

Synonyms:

Ras-related protein Rab-3B, RAB3B

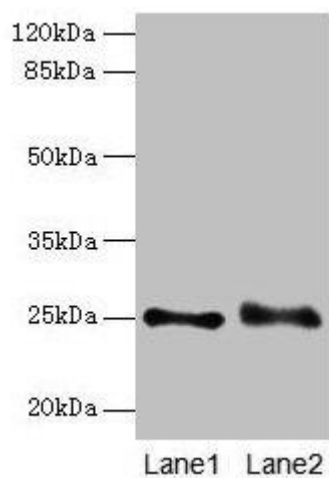
Immunogen:

Recombinant Human Ras-related protein Rab-3B protein (1-219AA).

Storage:

Preservative: 0.03% Proclin 300. Constituents: 50% Glycerol, 0.01M PBS, PH 7.4

Product Images



Western blot

All lanes: RAB3B antibody at 4 μ g/ml

Lane 1: Mouse brain tissue

Lane 2: U87 whole cell lysate

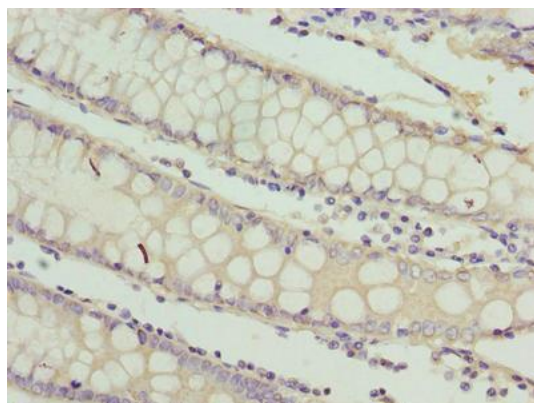
Secondary

Goat polyclonal to rabbit IgG at 1/10000 dilution

Predicted band size: 25 kDa

Observed band size: 25 kDa

.



Immunohistochemistry of paraffin-embedded human colon cancer using PACO29332 at dilution of 1:100.