

RAB4B Antibody



PACO29336

Product Information

Size:

50ug

Reactivity:

Human, Mouse

Source:

Rabbit

Isotype:

IgG

Applications:

ELISA, WB, IHC

Recommended dilutions:

ELISA:1:2000-1:10000, WB:1:1000-1:5000,
IHC:1:20-1:200

Protein Background:

Protein transport. Probably involved in vesicular traffic.

Gene ID:

RAB4B

Uniprot

P61018

Synonyms:

Ras-related protein Rab-4B, RAB4B

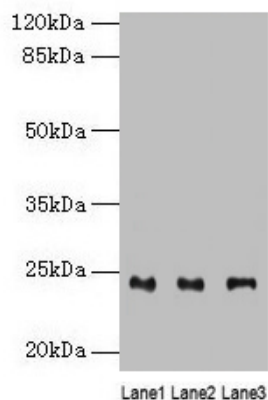
Immunogen:

Recombinant Human Ras-related protein Rab-4B protein (2-213AA).

Storage:

Preservative: 0.03% Proclin 300. Constituents: 50% Glycerol, 0.01M PBS, PH 7.4

Product Images



Western blot

All lanes: RAB4B antibody at 4 μ g/ml

Lane 1: Mouse stomach tissue

Lane 2: Mouse kidney tissue

Lane 3: Mouse gonadal tissue

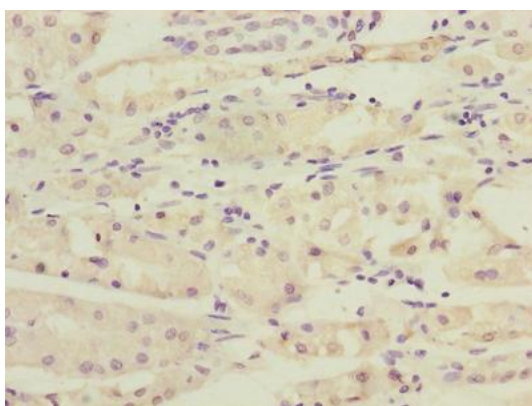
Secondary

Goat polyclonal to rabbit IgG at 1/10000 dilution

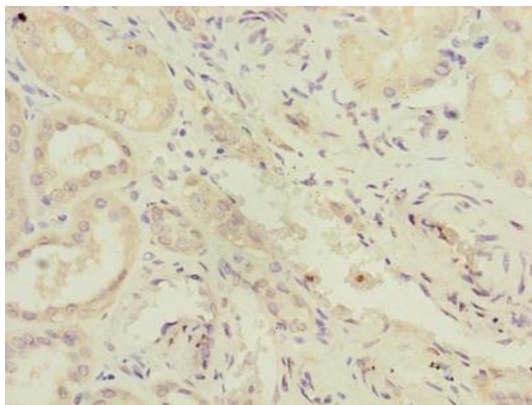
Predicted band size: 24, 28 kDa

Observed band size: 24 kDa

.



Immunohistochemistry of paraffin-embedded human gastric cancer using PACO29336 at dilution of 1:100.



Immunohistochemistry of paraffin-embedded human kidney tissue using PACO29336 at dilution of 1:100.