

# RAD17 Antibody



PACO29356

---

## Product Information

**Size:**

50ug

**Reactivity:**

Human, Mouse

**Source:**

Rabbit

**Isotype:**

IgG

**Applications:**

ELISA, WB, IHC

**Recommended dilutions:**

ELISA:1:2000-1:10000, WB:1:500-1:2000,  
IHC:1:20-1:200

**Protein Background:**

Essential for sustained cell growth, maintenance of chromosomal stability, and ATR-dependent checkpoint activation upon DNA damage. Has a weak ATPase activity required for binding to chromatin. Participates in the recruitment of the RAD1-RAD9-HUS1 complex and RHNO1 onto chromatin, and in CHEK1 activation. May also serve as a sensor of DNA replication progression, and may be involved in homologous recombination.

**Gene ID:**

RAD17

**Uniprot**

O75943

**Synonyms:**

Cell cycle checkpoint protein RAD17 (hRad17) (RF-C/activator 1 homolog), RAD17, R24L

**Immunogen:**

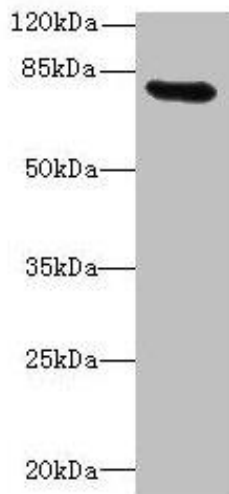
Recombinant Human Cell cycle checkpoint protein RAD17 protein (1-270AA).

**Storage:**

Preservative: 0.03% Proclin 300. Constituents: 50% Glycerol, 0.01M PBS, PH 7.4

## Product Images

---



### Western blot

All lanes: RAD17 antibody at 12 $\mu$ g/ml + Mouse thymus tissue

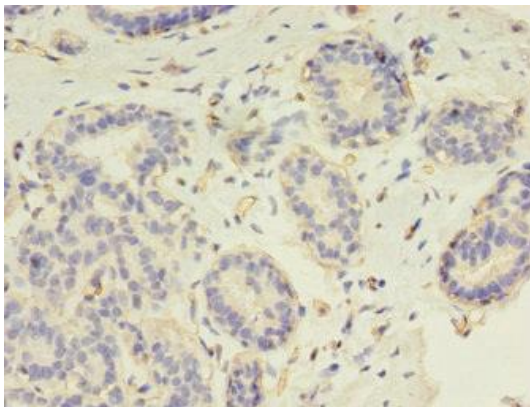
Secondary

Goat polyclonal to rabbit IgG at 1/10000 dilution

Predicted band size: 78, 76, 58, 67 kDa

Observed band size: 78 kDa

.



Immunohistochemistry of paraffin-embedded human breast cancer using PACO29356 at dilution of 1:100.