

## Product Information

**Size:**

50ug

**Reactivity:**

Human

**Source:**

Rabbit

**Isotype:**

IgG

**Applications:**

ELISA, IHC

**Recommended dilutions:**

ELISA:1:2000-1:10000, IHC:1:20-1:200

**Protein Background:**

Cold-inducible mRNA binding protein that enhances global protein synthesis at both physiological and mild hypothermic temperatures. Reduces the relative abundance of microRNAs, when overexpressed. Enhances phosphorylation of translation initiation factors and active polysome formation.

**Gene ID:**

RBM3

**Uniprot**

P98179

**Synonyms:**

RNA-binding protein 3 (RNA-binding motif protein 3) (RNPL), RBM3, RNPL

**Immunogen:**

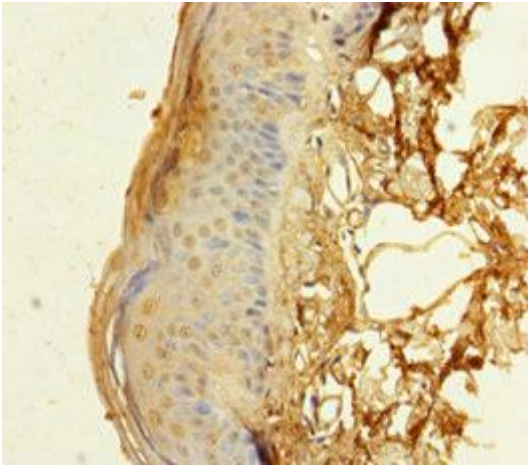
Recombinant Human RNA-binding protein 3 protein (1-157AA).

**Storage:**

Preservative: 0.03% Proclin 300. Constituents: 50% Glycerol, 0.01M PBS, PH 7.4

## Product Images

---



Immunohistochemistry of paraffin-embedded human skin tissue using PACO29404 at dilution of 1:100.