

## Product Information

**Size:**

50ug

**Reactivity:**

Human

**Source:**

Rabbit

**Isotype:**

IgG

**Applications:**

ELISA, IHC, IF

**Recommended dilutions:**

ELISA:1:2000-1:10000, IHC:1:20-1:200,  
IF:1:50-1:200

**Protein Background:**

Acts as an E2-dependent E3 ubiquitin-protein ligase, probably involved in the ER-associated protein degradation pathway.

**Gene ID:**

RNF103

**Uniprot**

O00237

**Synonyms:**

E3 ubiquitin-protein ligase RNF103 (EC 2.3.2.27) (KF-1) (hKF-1) (RING finger protein 103) (RING-type E3 ubiquitin transferase RNF103) (Zinc finger protein 103 homolog) (Zfp-103), RNF103, ZFP103

**Immunogen:**

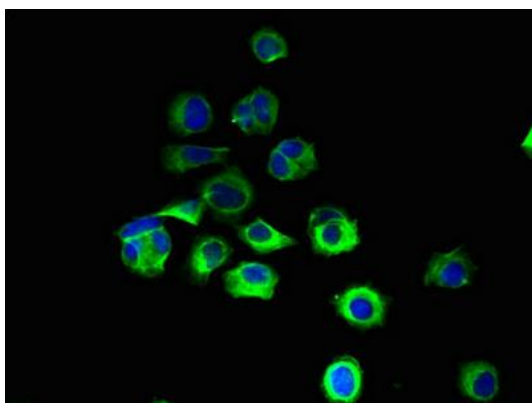
Recombinant Human E3 ubiquitin-protein ligase RNF103 protein (432-685AA).

**Storage:**

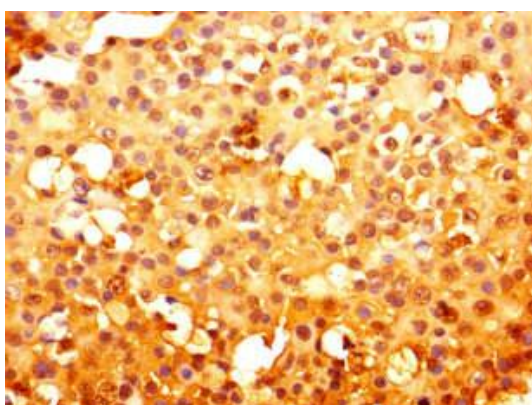
Preservative: 0.03% Proclin 300. Constituents: 50% Glycerol, 0.01M PBS, PH 7.4

## Product Images

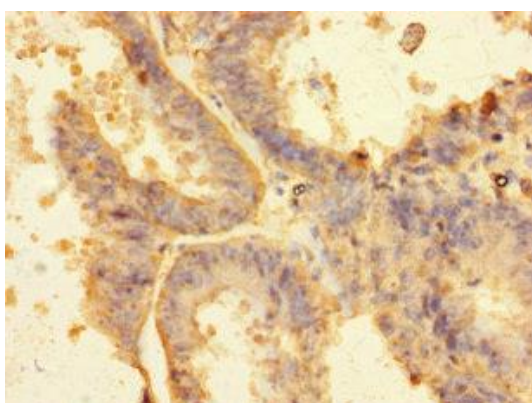
---



Immunofluorescent analysis of MCF-7 cells using PACO29532 at dilution of 1:100 and Alexa Fluor 488-conjugated AffiniPure Goat Anti-Rabbit IgG(H+L).



Immunohistochemistry of paraffin-embedded human breast cancer using PACO29532 at dilution of 1:100.



Immunohistochemistry of paraffin-embedded human endometrial tissue using PACO29532 at dilution of 1:100.