

RNF148 Antibody



PACO29540

Product Information

Size:

50ug

Reactivity:

Human

Source:

Rabbit

Isotype:

IgG

Applications:

ELISA, WB, IHC, IF

Recommended dilutions:

ELISA:1:2000-1:10000, WB:1:500-1:2000,
IHC:1:20-1:200, IF:1:50-1:200

Protein Background:

Gene ID:

RNF148

Uniprot

Q8N7C7

Synonyms:

RING finger protein 148, RNF148

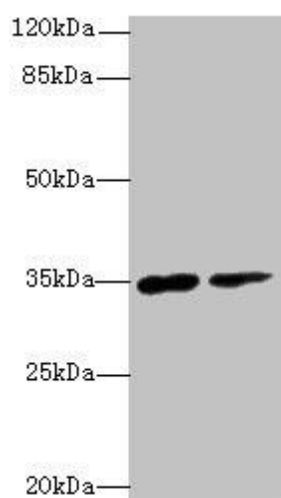
Immunogen:

Recombinant Human RING finger protein 148 protein (208-305AA).

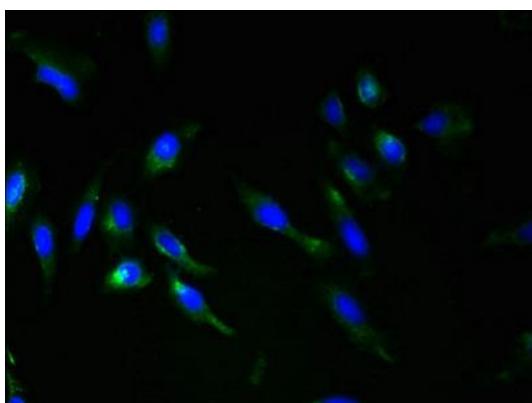
Storage:

Preservative: 0.03% Proclin 300. Constituents: 50% Glycerol, 0.01M PBS, PH 7.4

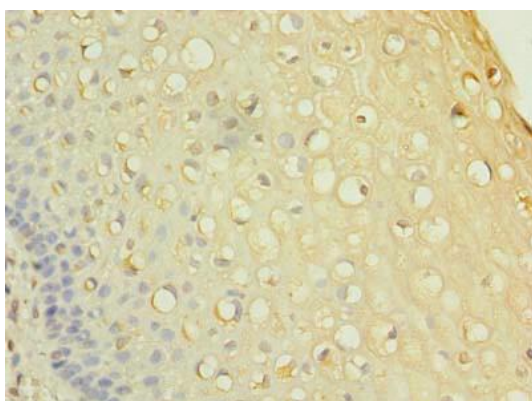
Product Images



Western blot
All lanes: RNF148 antibody at 6 μ g/ml
Lane 1: Hela whole cell lysate
Lane 2: HepG2 whole cell lysate
Secondary
Goat polyclonal to rabbit IgG at 1/10000 dilution
Predicted band size: 35 kDa
Observed band size: 35 kDa
.



Immunofluorescent analysis of Hela cells using PACO29540 at dilution of 1:100 and Alexa Fluor 488-conjugated AffiniPure Goat Anti-Rabbit IgG(H+L).



Immunohistochemistry of paraffin-embedded human cervical cancer using PACO29540 at dilution of 1:100.