

# RNF26 Antibody



PACO29560

---

## Product Information

**Size:**

50ug

**Reactivity:**

Human

**Source:**

Rabbit

**Isotype:**

IgG

**Applications:**

ELISA, WB, IHC, IF

**Recommended dilutions:**

ELISA:1:2000-1:10000, WB:1:500-1:2000,  
IHC:1:20-1:200, IF:1:50-1:200

**Protein Background:**

zinc ion binding.

**Gene ID:**

RNF26

**Uniprot**

Q9BY78

**Synonyms:**

E3 ubiquitin-protein ligase RNF26 (EC 2.3.2.27) (RING finger protein 26), RNF26

**Immunogen:**

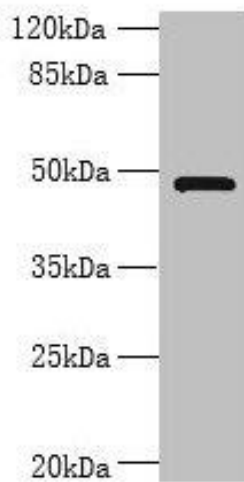
Recombinant Human E3 ubiquitin-protein ligase RNF26 protein (246-433AA).

**Storage:**

Preservative: 0.03% Proclin 300. Constituents: 50% Glycerol, 0.01M PBS, PH 7.4

## Product Images

---



### Western blot

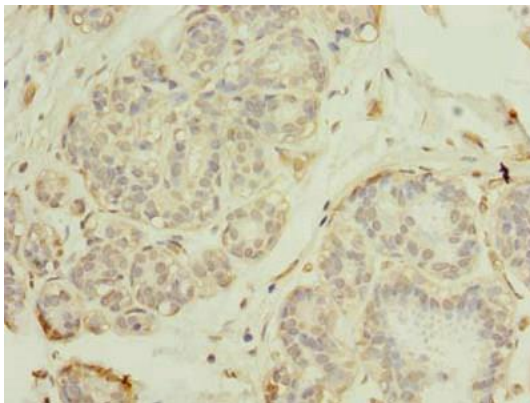
All lanes: RNF26 antibody at 6 $\mu$ g/ml + 293T whole cell lysate

Secondary

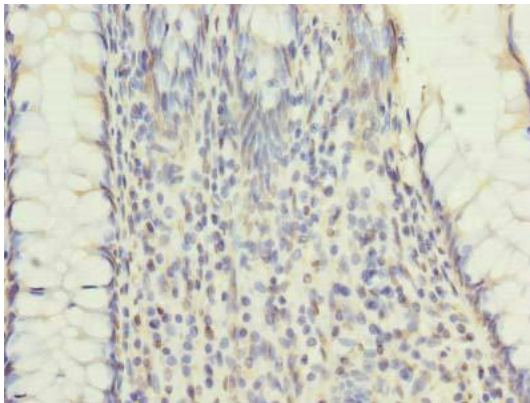
Goat polyclonal to rabbit IgG at 1/10000 dilution

Predicted band size: 48 kDa

Observed band size: 48 kDa



Immunohistochemistry of paraffin-embedded human breast cancer using PACO29560 at dilution of 1:100.



Immunohistochemistry of paraffin-embedded human colon cancer using PACO29560 at dilution of 1:100.