

# S1PR1 Antibody



PACO29732

---

## Product Information

**Size:**

50ug

**Reactivity:**

Human, Mouse

**Source:**

Rabbit

**Isotype:**

IgG

**Applications:**

ELISA, WB, IHC, IF

**Recommended dilutions:**

ELISA:1:2000-1:10000, WB:1:500-1:5000,  
IHC:1:20-1:200, IF:1:50-1:200

**Protein Background:****Gene ID:**

S1PR1

**Uniprot**

P21453

**Synonyms:**

Sphingosine 1-phosphate receptor 1 (S1P receptor 1) (S1P1) (Endothelial differentiation G-protein coupled receptor 1) (Sphingosine 1-phosphate receptor Edg-1) (S1P receptor Edg-1) (CD antigen CD363), S1PR1, CHEDG1 EDG1

**Immunogen:**

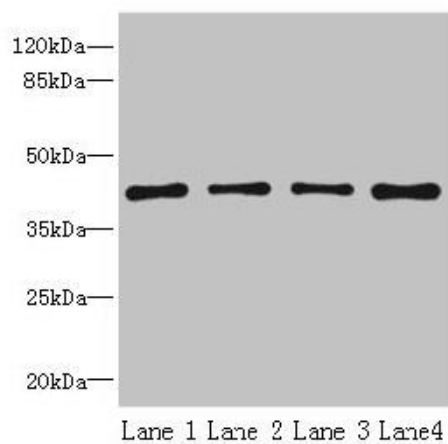
Recombinant Human Sphingosine 1-phosphate receptor 1 protein (311-382AA).

**Storage:**

Preservative: 0.03% Proclin 300. Constituents: 50% Glycerol, 0.01M PBS, PH 7.4

## Product Images

---



### Western blot

All lanes: S1PR1 antibody at 2 $\mu$ g/ml

Lane 1: Jurkat whole cell lysate

Lane 2: A375 whole cell lysate

Lane 3: Mouse thymus tissue

Lane 4: HepG2 whole cell lysate

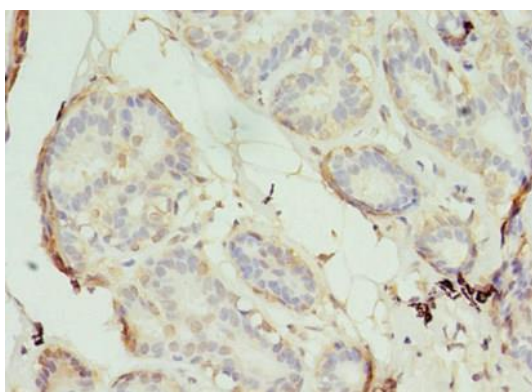
Secondary

Goat polyclonal to rabbit IgG at 1/10000 dilution

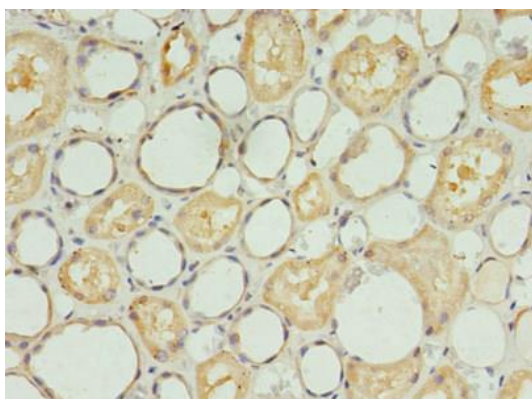
Predicted band size: 43 kDa

Observed band size: 43 kDa

.



Immunohistochemistry of paraffin-embedded human breast cancer using PACO29732 at dilution of 1:100.



Immunohistochemistry of paraffin-embedded human kidney tissue using PACO29732 at dilution of 1:100.