

SCAMP2 Antibody



PACO29748

Product Information

Size:

50ug

Reactivity:

Human

Source:

Rabbit

Isotype:

IgG

Applications:

ELISA, IHC, IF

Recommended dilutions:

ELISA:1:2000-1:10000, IHC:1:20-1:200,
IF:1:50-1:200

Protein Background:

Functions in post-Golgi recycling pathways. Acts as a recycling carrier to the cell surface.

Gene ID:

SCAMP2

Uniprot

O15127

Synonyms:

Secretory carrier-associated membrane protein 2 (Secretory carrier membrane protein 2), SCAMP2

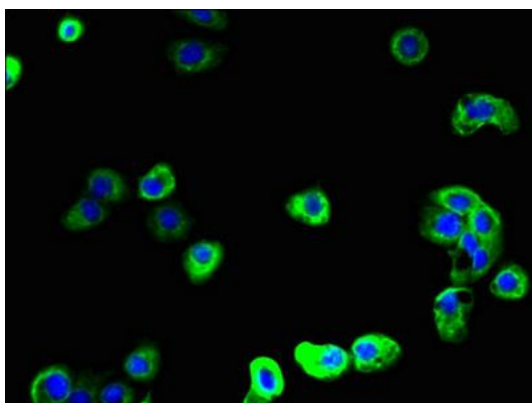
Immunogen:

Recombinant Human Secretory carrier-associated membrane protein 2 protein (1-153AA).

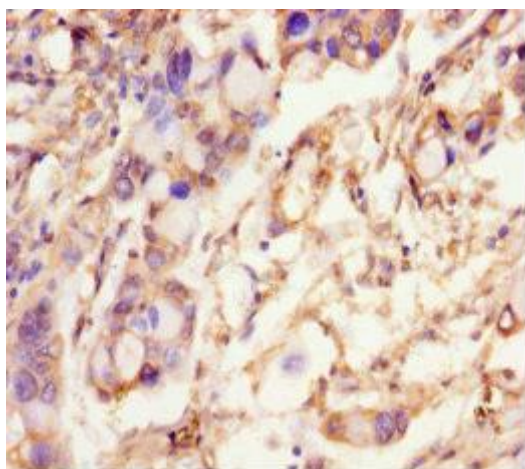
Storage:

Preservative: 0.03% Proclin 300. Constituents: 50% Glycerol, 0.01M PBS, PH 7.4

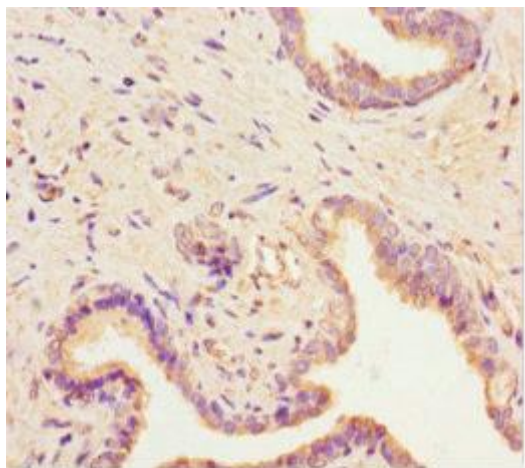
Product Images



Immunofluorescent analysis of A431 cells using PACO29748 at dilution of 1:100 and Alexa Fluor 488-conjugated AffiniPure Goat Anti-Rabbit IgG(H+L).



Immunohistochemistry of paraffin-embedded human pancreatic cancer using PACO29748 at dilution of 1:100.



Immunohistochemistry of paraffin-embedded human prostate cancer using PACO29748 at dilution of 1:100.