

SDF2 Antibody



PACO29792

Product Information

Size:

50ug

Reactivity:

Human

Source:

Rabbit

Isotype:

IgG

Applications:

ELISA, IHC

Recommended dilutions:

ELISA:1:2000-1:10000, IHC:1:20-1:200

Protein Background:

Gene ID:

SDF2

Uniprot

Q99470

Synonyms:

Stromal cell-derived factor 2 (SDF-2), SDF2

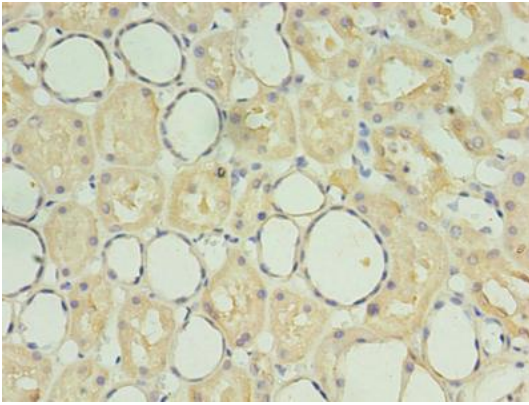
Immunogen:

Recombinant Human Stromal cell-derived factor 2 protein (19-211AA).

Storage:

Preservative: 0.03% Proclin 300. Constituents: 50% Glycerol, 0.01M PBS, PH 7.4

Product Images



Immunohistochemistry of paraffin-embedded human kidney tissue using PACO29792 at dilution of 1:100.