

## Product Information

**Size:**

50ug

**Reactivity:**

Human

**Source:**

Rabbit

**Isotype:**

IgG

**Applications:**

ELISA, IHC

**Recommended dilutions:**

ELISA:1:2000-1:10000, IHC:1:20-1:200

**Protein Background:**

Component of the coat protein complex II (COPII) which promotes the formation of transport vesicles from the endoplasmic reticulum (ER). The coat has two main functions, the physical deformation of the endoplasmic reticulum membrane into vesicles and the selection of cargo molecules.

**Gene ID:**

SEC31A

**Uniprot**

O94979

**Synonyms:**

Protein transport protein Sec31A (ABP125) (ABP130) (SEC31-like protein 1) (SEC31-related protein A) (Web1-like protein), SEC31A, KIAA0905 SEC31L1

**Immunogen:**

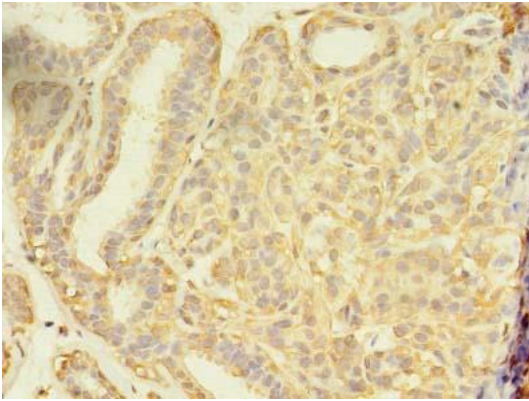
Recombinant Human Protein transport protein Sec31A protein (335-503AA).

**Storage:**

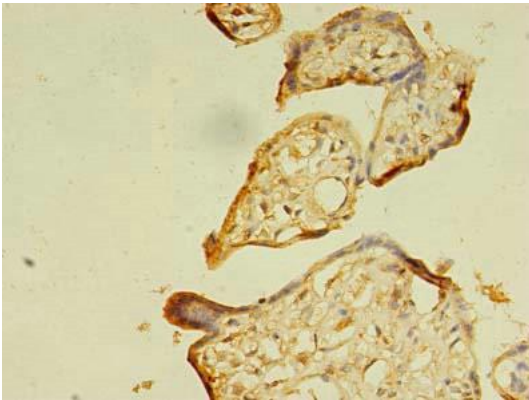
Preservative: 0.03% Proclin 300. Constituents: 50% Glycerol, 0.01M PBS, PH 7.4

## Product Images

---



Immunohistochemistry of paraffin-embedded human breast cancer using PACO29812 at dilution of 1:100.



Immunohistochemistry of paraffin-embedded human placenta tissue using PACO29812 at dilution of 1:100.